



## WAYNE COUNTY REGIONAL EDUCATIONAL SERVICE AGENCY

# 2024-2025 Services Summary

Wayne Regional Educational Service Agency, or WRESA, offers a wide range of services and support to our 33 school districts and 97 public school academies across Wayne County. Our team of nearly 275 employees works diligently to provide personalized support that is essential to improving student achievement and advancing educational outcomes throughout Wayne County.

Our comprehensive range of services includes professional development for educators, IT programs and services, administrative support for school districts, and much more. We are proud to serve our communities county-wide and celebrate our achievements together with our students, their families, our colleagues and community members for the 2024-2025 school year.



## WAYNE COUNTY, MICHIGAN: BY THE NUMBERS



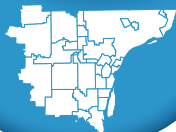
**261,631**

County-wide  
school enrollment



**33**

Local districts/  
Local Educational  
Agencies (LEAs)



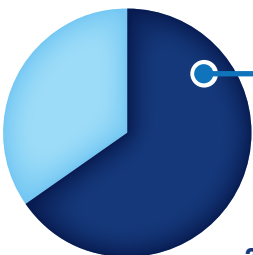
**97**

Public School  
Academies  
(PSAs)



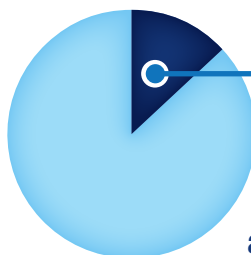
**534**

School buildings



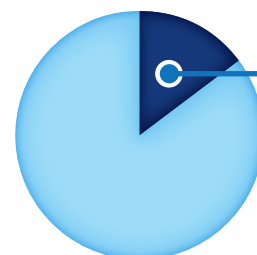
**65.3%**

Students who  
are economically  
disadvantaged



**13.11%**

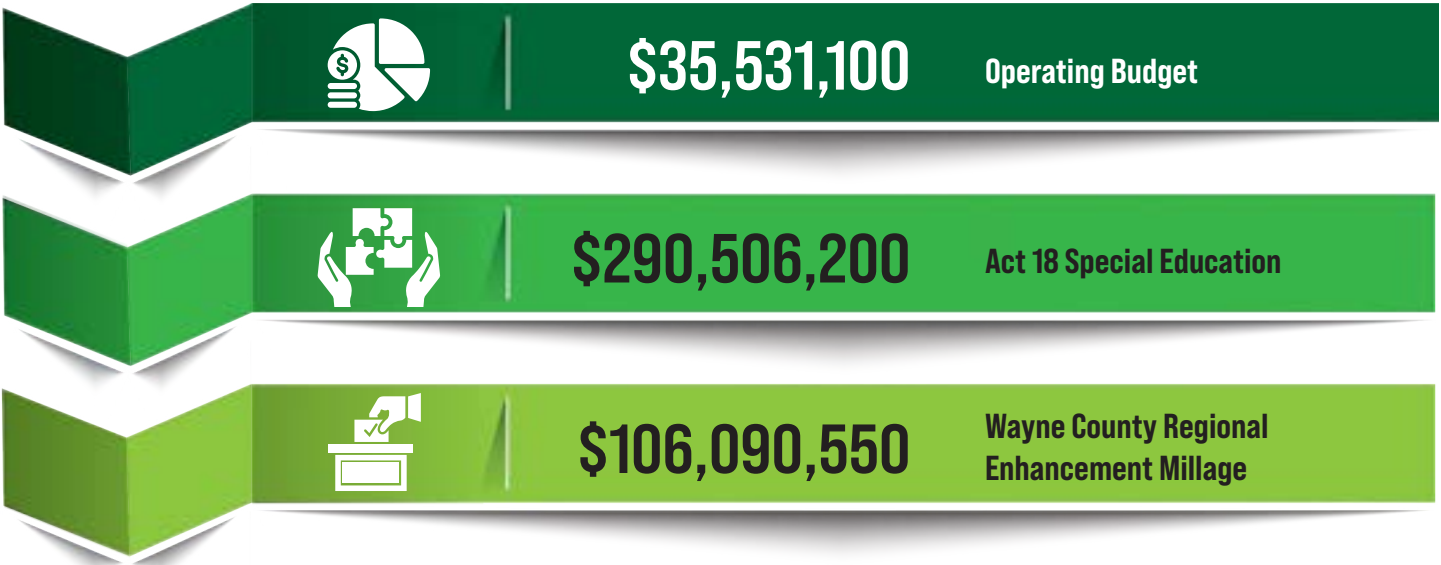
Students with  
an Individualized  
Education Plan



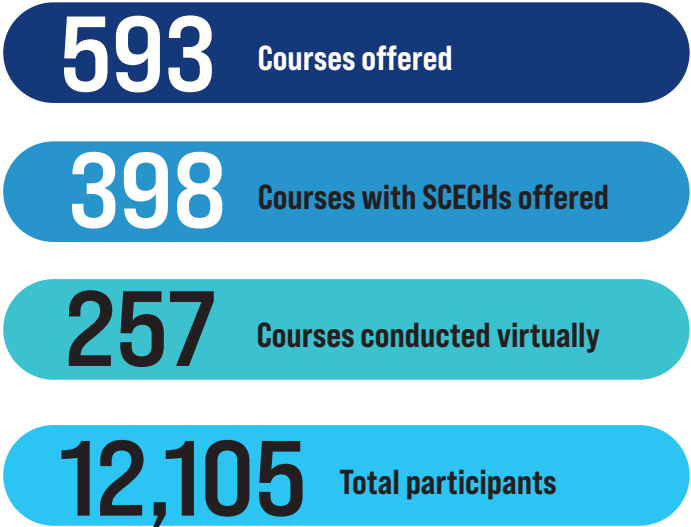
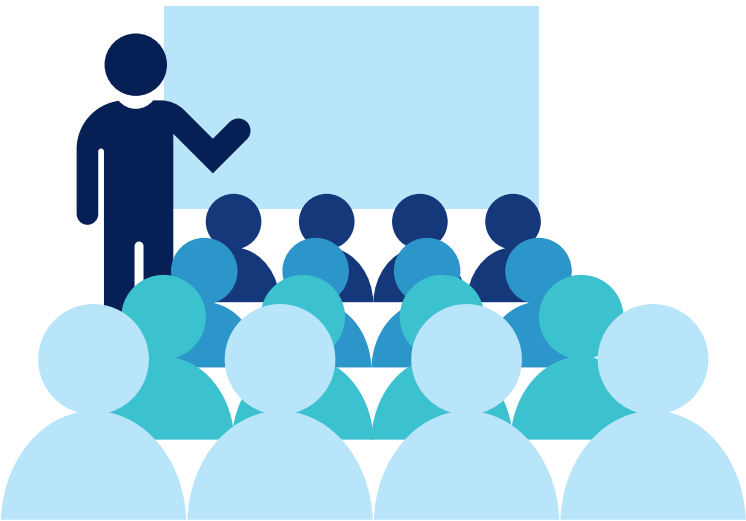
**14.8%**

Students who  
are Multilingual  
Learners

# BUDGET 2024-25



## PROFESSIONAL DEVELOPMENT





## EARLY CHILDHOOD

- **10,029** Total children in Wayne County Great Start Readiness early childhood classes in Wayne County
- **617** Total classrooms in Wayne County
- **\$105,548,398** Total allocation in Wayne County
- **4,391** Enrolled children in Detroit
  - **16** Detroit-based PSAs
  - **1** Detroit-based LEA
  - **57** Detroit-based Community-Based Organizations (CBOs)
  - **286** Detroit-based classrooms

## LITERACY

- **54** Early Literacy Coaches on Special Assignment funded by Wayne RESA
- **193** District instructional coaches in the WRESA coaching network
- **25** Days of professional development for Literacy Coaches
- **69** Professional development sessions focused on high quality literacy instruction
- **20** Districts represented in the Wayne County Literacy Learning Network Advisory Council
- **10,786** Students across **50** sites engaged in summer Science, Technology, Engineering, and Mathematics (STEM) literacy camps
- **60** Students across **8** sites engaging in Boys College Summer Literacy Institute
- **5** National speakers featured within our Equity-Focused Literacy Leaders Series with **120** educators participating



- More than **1,325** Educators trained in Language Essentials for Teachers of Reading and Spelling (LETRS)
- **186** Professional development recordings with more than **53,886** online views

## MULTILINGUAL LEARNER SUPPORT

- **36,406** Multilingual Learners in Wayne County
- **140** Educators engaged in Sheltered Instruction Observation Protocol® (SIOP)
- **71** Participants from Districts and PSAs represented in Wayne County Multilingual Learning Network

## CAREER COUNSELING SERVICE

- **37** High schools serviced
- **7** Career Counselors
- **1,667** Students referred
- **1,235** Students with a post-secondary plan
- **14,577** Students participated in career exposure events and activities





## CONTENT AREA SUPPORT

### ► Mathematics

- **58** Educators engaged in the Elementary Mathematics Leaders Network
- **23** Educators engaged in the Secondary Mathematics Leaders Network
- **37** Early Mathematics Coaches on Special Assignment representing **22** districts
- **50** Mathematics Coaches engaging in the Wayne County Coaching Network

### ► Science

- Provided Science Leaders Learning Network to **34** districts and PSAs

### ► Social Studies

- Provided Social Studies Leaders Learning Network to **48** districts and PSAs

### ► Instructional Technology

- Provided Instructional Technology Leaders Network Opportunities to **28** districts and PSAs
- **19** Educators engaged in the Virtual Academy Leaders Network
- **251** Educators engaged in the WRESA Maker Network
- **9** District educational leaders providing guidance and input for the AI Exploratory Committee

### ► Library / Media

- **34** Educators engaged in the Library Media Leaders Network

### ► Safe & Healthy Schools

- **662** Educators trained in Transforming Research into Action to Improve the Lives of Students (TRAILS) programming
- **236** Educators trained in Michigan Model for Health Social and Emotional Learning Modules
- **188** Educators and parents trained in Question, Persuade, and Refer (QPR) and other suicide prevention programming
- **160** Educators trained in Comprehensive School Threat Assessment Guidelines (CSTAG) Levels 1 and 2
- **22** Wayne RESA workshops approved for Social Work Continuing Education Credits (SWCECs)
- **17** LEAs and PSAs benefitting from School Nurse Consulting Services from our **3** School Outreach Nurses. This figure decreased by two from last year as these districts hired full-time nurses— the ultimate goal of the cost-sharing program.
- **1,941** Student care coordination interactions delivered by our **3** School Outreach Nurses
- **19** LEAs and PSAs benefitting from 31n(6) and Wayne County Executive Office funding to provide new or expanded mental health supports and services to general education students with mild to moderate mental health needs
- **16** LEAs and PSAs benefitting from Health Resource Advocate (HRA) funding to address existing and emerging student mental and physical health issues resulting from the COVID-19 pandemic
- **13** LEAs and PSAs benefitting from Wayne County Executive Office funding to support Care Solace Care Coordination Services





## DISTRICT/SCHOOL CONTINUOUS IMPROVEMENT

### ► Continuous Improvement

- **129** Districts and PSAs receiving direct Continuous Improvement Support (MICIP)
- **119** Attendees of MICIP technical support (monthly engagement)

### ► Michigan Department of Education (MDE) Accountability Identification

- **88** Comprehensive Support and Improvement (CSI) schools
- **22** Targeted Support and Improvement (TSI) schools
- **28** Additional Targeted and Improvement (ATI) schools

### ► School Improvement Facilitation for CSI Schools

- **39** Staff providing services
- **38** Districts serviced
- **88** Schools serviced
- **>16,271** hours of direct support to schools

## SPECIAL EDUCATION

### ► Special Education Snapshot

- **37,475** Wayne County students with an Individualized Education Plan
- **9** LEA/PSA Directors Administrative Meetings
- **Act 18 Support for Programs and Services**
  - **5,891** Students in center-based programs
  - **791** Students with paraprofessional support
  - **\$25,816,232** Allocated for paraprofessional support

### ► General Supervision and Accountability (GSA)

- **113** GSA monitoring activities completed
- **66** Completed Corrective Action Plans
- **289** Student record reviews
- **10** Intensive district support on-site

### ► Early On® (Birth to Age 3)

- **4,627** Referrals processed
- **2,334** Evaluations completed
- **4,002** Children who received Early On services

### ► Assistive Technology

- **2,475** Students who received assistive technology support and devices

### ► Parent Advisory Committee (PAC)

- **42** Parents served on the Parent Advisory Committee, meeting **7** times per year

### ► Positive Behavioral Interventions and Supports (PBIS)

- **280** Schools with WRESA PBIS agreements
- **150** Wayne County PBIS Coaches
- **113** Behavior consultations
- **79** Wrap-around support





## SHARED OPERATIONAL SERVICES

### ► Business services

- 35 Districts/PSAs participating in Edustaff substitute teacher services

### ► Technology Services (IT)

- 60 Districts/PSAs supported with SMART consortium business office information system
- 77 Districts/PSAs supported with MISTAR consortium student information system
- 32 Districts/PSAs using the consortium assessment system
- 40 Districts/PSAs using consortium library information system
- 22 Districts/PSAs using consortium-hosted Moodle learning management system
- 57 Districts/PSAs using consortium emergency communication system

- 27 Leased fiber optic connections to schools
- 12 Districts/PSAs receiving network management Field Services
- 6 Districts/PSAs receiving supplemental technical staffing services

### ► Transportation Services

- 62 Districts/PSAs using Polyplot software
- 1,968 Bus drivers and transportation supervisors trained

### ► Application Field Services

- 13 Districts/PSAs receiving payroll-related field services
- 2 Districts/PSAs receiving student data-related field services







*Wayne RESA Board of Education—Back L-R: James S. Beri, Superintendent Dr. Daveda J. Colbert, James Petrie  
Front L-R: Lynda S. Jackson, Mary E. Blackmon, Danielle Funderburg*

## LEADERSHIP

### ► Wayne RESA Leading the Way

Wayne RESA's vision statement is **"Leading...Learning for All."** We believe that Leadership is the foundation of our organization. Below are some examples of Wayne RESA's demonstrated leadership:

- Founding member of the K-12 Alliance, a leading voice for public education in Michigan
- Great Lakes Equity Project/Midwest Equity Assistance Center partner
- Member of the General Education Leaders Network (GELN)
- Member of the Special Education Instructional Leaders Network (SEILN)
- Standing member and fiscal agent for the Great Start Collaborative–Wayne County, the county-wide partnership supporting early childhood development
- MiLEAP: Michigan Department of Lifelong Education, Advancement, and Potential (MiLEAP) Pre-K for All leadership
- Founding member of the School Finance Research Collaborative
- Member of Michigan Education Technology Leaders (METL)
- Advisor to Michigan State Education Network (SEN)
- Member of Michigan Collaboration Hub (MiCH)
- Member of Center for Educational Performance and Information (CEPI) Data Collections Advisory
- Member of the Early Childhood Administrators Network (ECAN)
- Lead the Wayne County Communications Consortium
- Member of the National and Michigan School Public Relations Associations (NSPRA, MSPRA) and Intermediate School District Public Relations (ISDPR) Network
- Lead Intermediate School Districts (ISDs) for the development of the Talent Together consortium
- Lead ISDs for the School Infrastructure Projects (Sec. 11y)



*Dr. Daveda J. Colbert  
Superintendent, Wayne RESA*



### ► Leadership Opportunities Provided

Wayne RESA offers professional development to leaders in the following areas:

- Curriculum Administrators
- Adult Education Administrators
- Library Media Leaders
- Instructional Technology Leaders
- Literacy Leaders
- Math Leaders
- Continuous Improvement Leaders for MICIP Leaders/Teams
- Science Leaders
- Social Studies Leaders
- Wayne County State and Federal Program Leaders
- Elementary and Secondary Principals Networks
- Alternative School Leadership Network
- Special Education Administrators
- Parent Advisory Committee
- Technology Coordinators
- Network Administrators
- Cybersecurity Leaders
- Business Managers
- Wayne Future Leaders Initiative
- Learning Series for Leaders
- Trauma-Informed Leadership
- New Principal/Assistant Principal Academy
- New Teacher Academy
- School Safety Comprehensive School Threat Assessment Guidelines (CSTAG) and Behavioral Threat Assessment and Management (BTAM) Leadership
- Wayne County Homeless Liaisons
- Wayne County Foster Care Liaisons
- Artificial Intelligence Advisory Committee
- Attendance Collaborative Seminar
- New and Aspiring Curriculum Leaders
- Equity Literacy Leaders

### DEVELOPING PARTNERSHIPS

#### ► Great Start Collaborative

- School Readiness Advisory Committee (Parent/Teacher Engagement)
- Talking in Teaching with Elaine Koons (Presenter at advisory meeting on Talk, Read, Sing)

#### ► PBS/DPTV (Public Broadcasting System/Detroit Public Television)

- Family Engagement initiative

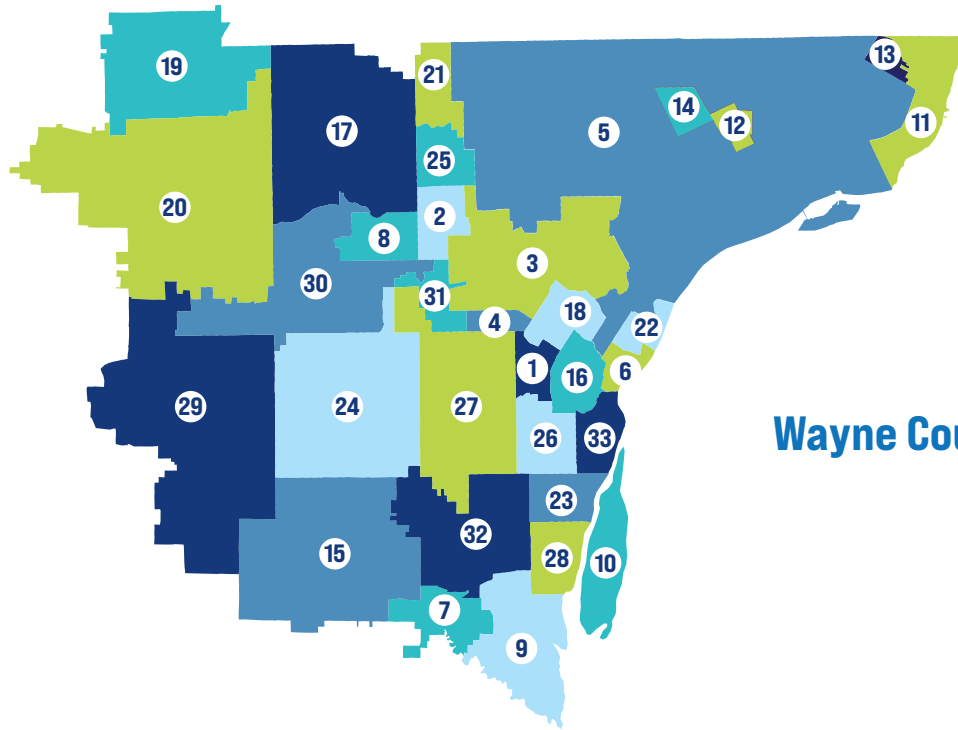
#### ► Wayne County Head Start

- Collaborative agreement to serve 4-year-old children

#### ► Wayne County Health Department

- Vision screenings and glasses (Vision to Learn)





## Wayne County, Michigan

### ENROLLMENT

MAP	ENTITY	2023-24	2024-25
—	Wayne County Michigan, county-wide	260,891	261,631
1	Allen Park Public Schools	3,706	3,703
2	Crestwood School District	3,683	3,686
3	Dearborn City School District	19,465	19,149
4	Dearborn Heights School District No. 7	2,415	2,382
5	Detroit Public Schools Community District	48,073	48,700
6	Ecorse Public Schools	1,145	1,156
7	Flat Rock Community Schools	1,764	1,722
8	Garden City Public Schools	3,232	3,237
9	Gibraltar School District	3,667	3,713
10	Grosse Ile Township Schools	1,566	1,493
11	Grosse Pointe Public Schools	6,434	6,398
12	School District of the City of Hamtramck	2,897	2,863
13	The School District of the City of Harper Woods	2,702	2,690
14	Highland Park City Schools	0	0
15	Huron School District	2,539	2,543
16	School District of the City of Lincoln Park	4,950	4,927
17	Livonia Public Schools School District	13,198	13,170

MAP	ENTITY	2023-24	2024-25
18	Melvindale-Northern Allen Park Schools	2,942	2,992
19	Northville Public Schools	6,980	7,047
20	Plymouth-Canton Community Schools	16,199	16,035
21	Redford Union Schools, District No. 1	2,391	2,385
22	School District of the City of River Rouge	2,651	2,755
23	Riverview Community Schools	2,773	2,744
24	Romulus Community Schools	2,142	2,085
25	South Redford School District	3,754	3,795
26	Southgate Community School District	3,547	3,922
27	Taylor School District	5,559	5,256
28	Trenton Public Schools	2,568	2,613
29	Van Buren Public Schools	4,283	4,247
30	Wayne-Westland Community School District	9,435	9,593
31	Westwood Community School District	1,527	1,511
32	Woodhaven-Brownstown School District	5,352	5,443
33	School District of the City of Wyandotte	4,301	4,250
—	All Public School Academies, combined	63,083	63,993





## WAYNE RESA MISSION

---

Wayne RESA is committed to leadership through service and collaboration for excellence in teaching and learning for all.

## WAYNE RESA VISION

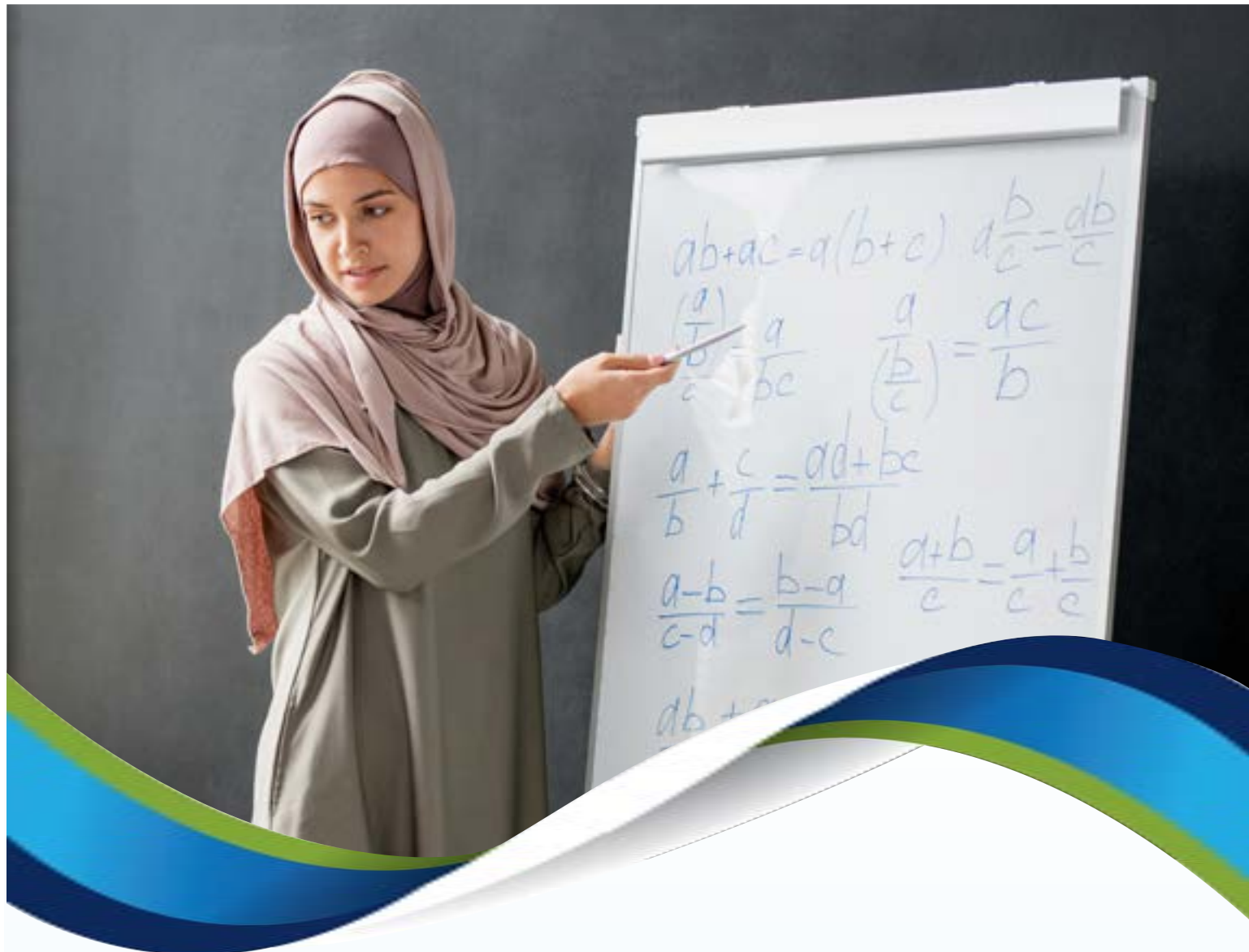
---

Leading... Learning for All

## WAYNE RESA BELIEFS

---

- We believe **leadership** is the foundation of our organization.
- We believe **service** is the core of our work.
- We believe **collaboration** is essential to our success.
- We believe in the pursuit of **excellence**.



**SERVICE  
LEADERSHIP  
COLLABORATION  
EXCELLENCE**

#### **Wayne RESA**

33500 Van Born Road • Wayne, MI 48184

734.334.1300 • 734.334.1620 FAX

[www.resa.net](http://www.resa.net)

#### **Board of Education**

James S. Beri • Mary E. Blackmon

Danielle Funderburg • Lynda S. Jackson • James Petrie

#### **Superintendent**

Daveda J. Colbert, Ph.D.

*Wayne RESA is an equal opportunity employer.*