

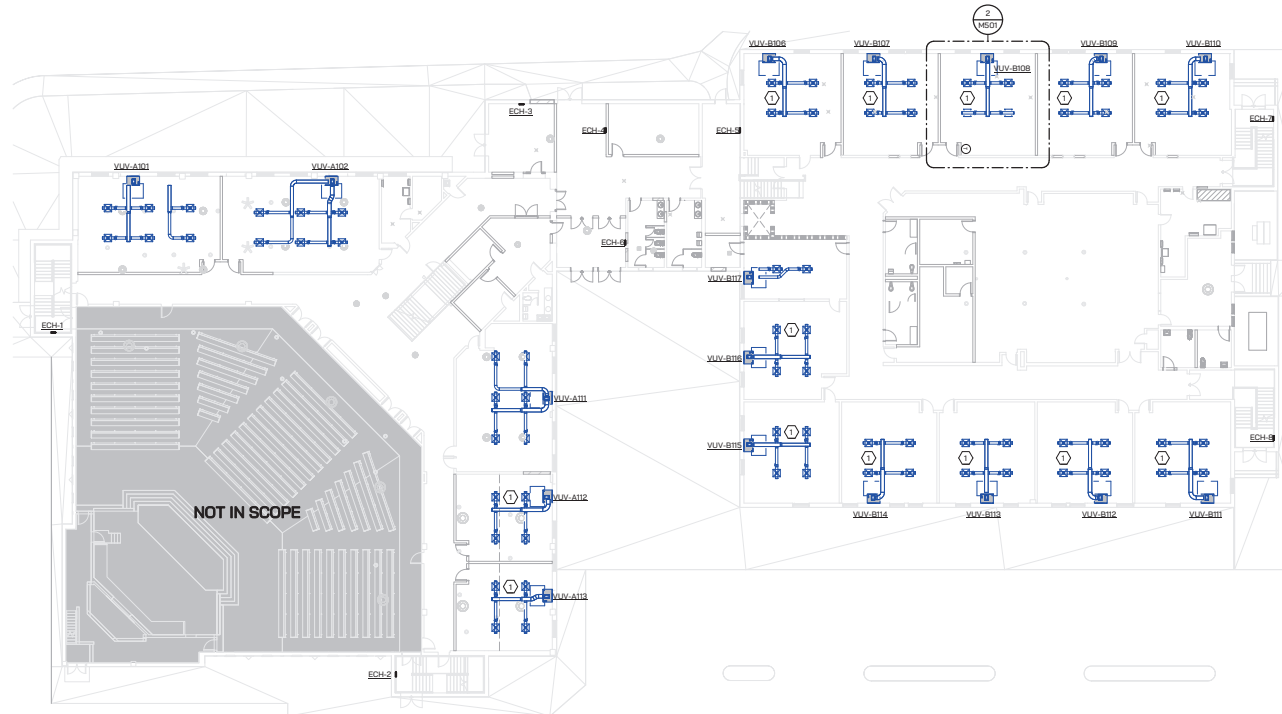
SHEET METAL KEYED NOTES

1 REFER TO TYP. CLASSROOM MECHANICAL PLANS ON MSD2.

KEY PLAN



ISSUE DATE	ISSUED FOR
07/14/23	MEP Pre-Purchase
DRAWN	
CHECKED	
APPROVED	



OVERALL FIRST FLOOR SHEET METAL PLAN
1/16" = 1'-0"

FRENCH ASSOCIATES
we create the future
ASSOCIATES

3746 MILL STREET
ANN ARBOR, MI 48107
T: 734.466.1372
www.frenchassociates.com

PROJECT
Wayne RESA
Beacon Day
Treatment Center
Relocation - Phase 1
BP1 MEP
Pre-Purchase

SHEET
OVERALL
FIRST FLOOR
MECHANICAL
PLAN

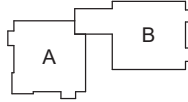
PROJECT NUMBER
23.065

SHEET NUMBER
M310

SHEET METAL KEYED NOTES

1 REFER TO TYP. CLASSROOM MECHANICAL PLANS ON M502.

KEY PLAN



ISSUE DATE	ISSUED FOR
07/14/23	MEP Pre-Purchase



FRENCH ASSOCIATES
INCORPORATED
3745 MILL STREET
BOSTON, MA 02108
T: 617.552.1377
WWW.FRENCHASSOCIATES.COM

PROJECT
Wayne RESA
Beacon Day
Treatment Center
Relocation - Phase 1
BP1 MEP
Pre-Purchase

SHEET
**MECHANICAL
ROOF PLAN**

PROJECT NUMBER
23.065

SHEET NUMBER
M330

23.065-BP1-MEP-M330-MECHANICAL ROOF PLAN

ROOF TOP UNIT SCHEDULE

TAG	TYPE	EQUIPMENT					AIRFLOW								HEATING				COOLING				ELECTRICAL		NOTES									
		MANUFACTURER	MODEL	LOCATION	SERVING	IEER	MAX BA (CFM)	MIN BA (CFM)	DESIGN OA (CFM)	MAX BA (CFM)	ESP (")	SAF HP	EF HP	FILTER (MERV)	TYPE	REFRIG	CAPACITY (#40)	EAT (F)	LAT (F)	STAGE	QAP TOTAL/25%HL	EQB (F)	EWB (F)	LDB (F)		LWB (F)	V/FW/Hz	MCA	MOP					
EXIST. RTU-1	SINGLE ZONE VAV	TRANE	INTELLIPAK	UNIT A - ROOF	UNIT A - AUDITORIUM	-	22,500	10,000	-	-	-	-	-	-	-	-	-	-	-	-	-	-	-	-	-	-	-	-	-	-	-	460/60/3	-	-
FUTURE	MULTI-ZONE VAV (DZ)	TRANE	VOYAGERS	UNIT A - ROOF	UNIT A - PHASE 2	14.6	10,000	-	2,500	7,500	-	-	-	4" MERV 14	DAS, PKG DX	R-22	284	45	71.6	-	346.32/258.17	79	66	57.67	55.82	460/60/3	91	110	1.2	1.2				
RTU-3	MULTI-SPEED FAN	TRANE	PRECEDENT	UNIT B - MID ROOF	UNIT B - 1ST FLOOR	14.6	2,200	-	440	1,760	1.876	3	-	2" MERV 13	DAS, PKG DX	-	121.5	50	87.97	-	86.7/83.56	78	65	54.71	52.97	460/60/3	21	25	1.2, 3					
RTU-4	MULTI-SPEED FAN	TRANE	PRECEDENT	UNIT B - MID ROOF	UNIT B - 2ND FLOOR, OFFICES	14.6	3,000	-	600	2,400	1.742	3	-	2" MERV 13	DAS, PKG DX	-	193	50	98.01	-	100.75/97.74	78	65	58.37	54.36	460/60/3	25	32	1.2, 4					
RTU-5	MULTI-SPEED FAN	TRANE	PRECEDENT	UNIT B - HIGH ROOF	UNIT B - 2ND FLOOR - GYMNASIUM	13	8,000	-	1,600	6,400	1.914	3	-	2" MERV 13	DAS, PKG DX	-	324	50	86.97	-	239.92/193.3	78	65	57.56	55.71	460/60/3	57	70	1.2, 5					
EXIST. RTU-6	SINGLE ZONE VAV	TRANE	VOYAGER	UNIT B - HIGH ROOF	UNIT B - 1ST FLOOR - CAFETERIA	-	-	-	-	-	-	-	-	-	-	-	-	-	-	-	-	-	-	-	-	-	-	-	-	-	460/60/3	-	-	

- NOTES:
- 1) PROVIDE SUPPLY AND RETURN AIR DUCT DETECTORS FOR SYSTEM SHUTDOWN PER CODE.
 - 2) PROVIDE UNIT EQUIPPED WITH ECM SUPPLY FAN.
 - 3) PROVIDE UNIT EQUIPPED WITH DEHUMIDIFICATION/HOT GAS REHEAT AT 51.94 MBH AND 3.39 GPH MOISTURE REMOVAL RATE.
 - 4) PROVIDE UNIT EQUIPPED WITH DEHUMIDIFICATION/HOT GAS REHEAT AT 50.49 MBH AND 3.62 GPH MOISTURE REMOVAL RATE.
 - 5) PROVIDE UNIT EQUIPPED WITH DEHUMIDIFICATION/HOT GAS REHEAT AT 198.91 MBH AND 13.44 GPH MOISTURE REMOVAL RATE.

VERTICAL UNIT VENTILATOR SCHEDULE

MARK	MANUFACTURER	MODEL	SUPPLY AIR (CFM)	ESP (")	OA (CFM)	FILTER	TYPE	COOLING			HEATING			ELECTRICAL			REMARKS
								TOTAL CAPACITY (BTU/h)	SENSIBLE CAPACITY (BTU/h)	EFFICIENCY	CAPACITY (BTU/h)	ODP	ELECTRIC CAPACITY (BTU/h)	FLA	VOLTAGE	PHASE	
VUV-A01	CHANGEAIR	SOPHOMORE	1200 CFM	0.25 in-wg	400 CFM	MERV-13	DX	36300.0 Btu/h	27700.0 Btu/h	15.5 IEER	33000.0 Btu/h	3.5	51890.0 Btu/h	27 A	460 V	3	-
VUV-A02	CHANGEAIR	SOPHOMORE	1200 CFM	0.25 in-wg	400 CFM	MERV-13	DX	36300.0 Btu/h	27700.0 Btu/h	15.5 IEER	33000.0 Btu/h	3.5	51890.0 Btu/h	27 A	460 V	3	-
VUV-A11	CHANGEAIR	SOPHOMORE	1200 CFM	0.25 in-wg	400 CFM	MERV-13	DX	36300.0 Btu/h	27700.0 Btu/h	15.5 IEER	33000.0 Btu/h	3.5	51890.0 Btu/h	27 A	460 V	3	-
VUV-A12	CHANGEAIR	SOPHOMORE	900 CFM	0.25 in-wg	350 CFM	MERV-13	DX	24400.0 Btu/h	19200.0 Btu/h	16.6 IEER	22500.0 Btu/h	3.4	40940.0 Btu/h	21 A	460 V	3	-
VUV-A13	CHANGEAIR	SOPHOMORE	900 CFM	0.25 in-wg	350 CFM	MERV-13	DX	24400.0 Btu/h	19200.0 Btu/h	16.6 IEER	22500.0 Btu/h	3.4	40940.0 Btu/h	21 A	460 V	3	-
VUV-A201	CHANGEAIR	SOPHOMORE	900 CFM	0.25 in-wg	350 CFM	MERV-13	DX	24400.0 Btu/h	19200.0 Btu/h	16.6 IEER	22500.0 Btu/h	3.4	40940.0 Btu/h	21 A	460 V	3	-
VUV-A202	CHANGEAIR	SOPHOMORE	900 CFM	0.25 in-wg	350 CFM	MERV-13	DX	24400.0 Btu/h	19200.0 Btu/h	16.6 IEER	22500.0 Btu/h	3.4	40940.0 Btu/h	21 A	460 V	3	-
VUV-A203	CHANGEAIR	SOPHOMORE	900 CFM	0.25 in-wg	350 CFM	MERV-13	DX	24400.0 Btu/h	19200.0 Btu/h	16.6 IEER	22500.0 Btu/h	3.4	40940.0 Btu/h	21 A	460 V	3	-
VUV-A209	CHANGEAIR	SOPHOMORE	900 CFM	0.25 in-wg	350 CFM	MERV-13	DX	24400.0 Btu/h	19200.0 Btu/h	16.6 IEER	22500.0 Btu/h	3.4	40940.0 Btu/h	21 A	460 V	3	-
VUV-A210	CHANGEAIR	SOPHOMORE	900 CFM	0.25 in-wg	350 CFM	MERV-13	DX	24400.0 Btu/h	19200.0 Btu/h	16.6 IEER	22500.0 Btu/h	3.4	40940.0 Btu/h	21 A	460 V	3	-
VUV-A211	CHANGEAIR	SOPHOMORE	900 CFM	0.25 in-wg	350 CFM	MERV-13	DX	24400.0 Btu/h	19200.0 Btu/h	16.6 IEER	22500.0 Btu/h	3.4	40940.0 Btu/h	21 A	460 V	3	-
VUV-B106	CHANGEAIR	SOPHOMORE	900 CFM	0.25 in-wg	350 CFM	MERV-13	DX	24400.0 Btu/h	19200.0 Btu/h	16.6 IEER	22500.0 Btu/h	3.4	40940.0 Btu/h	21 A	460 V	3	-
VUV-B107	CHANGEAIR	SOPHOMORE	900 CFM	0.25 in-wg	350 CFM	MERV-13	DX	24400.0 Btu/h	19200.0 Btu/h	16.6 IEER	22500.0 Btu/h	3.4	40940.0 Btu/h	21 A	460 V	3	-
VUV-B108	CHANGEAIR	SOPHOMORE	900 CFM	0.25 in-wg	350 CFM	MERV-13	DX	24400.0 Btu/h	19200.0 Btu/h	16.6 IEER	22500.0 Btu/h	3.4	40940.0 Btu/h	21 A	460 V	3	-
VUV-B109	CHANGEAIR	SOPHOMORE	900 CFM	0.25 in-wg	350 CFM	MERV-13	DX	24400.0 Btu/h	19200.0 Btu/h	16.6 IEER	22500.0 Btu/h	3.4	40940.0 Btu/h	21 A	460 V	3	-
VUV-B110	CHANGEAIR	SOPHOMORE	900 CFM	0.25 in-wg	350 CFM	MERV-13	DX	24400.0 Btu/h	19200.0 Btu/h	16.6 IEER	22500.0 Btu/h	3.4	40940.0 Btu/h	21 A	460 V	3	-
VUV-B111	CHANGEAIR	SOPHOMORE	900 CFM	0.25 in-wg	350 CFM	MERV-13	DX	24400.0 Btu/h	19200.0 Btu/h	16.6 IEER	22500.0 Btu/h	3.4	40940.0 Btu/h	21 A	460 V	3	-
VUV-B112	CHANGEAIR	SOPHOMORE	900 CFM	0.25 in-wg	350 CFM	MERV-13	DX	24400.0 Btu/h	19200.0 Btu/h	16.6 IEER	22500.0 Btu/h	3.4	40940.0 Btu/h	21 A	460 V	3	-
VUV-B113	CHANGEAIR	SOPHOMORE	900 CFM	0.25 in-wg	350 CFM	MERV-13	DX	24400.0 Btu/h	19200.0 Btu/h	16.6 IEER	22500.0 Btu/h	3.4	40940.0 Btu/h	21 A	460 V	3	-
VUV-B114	CHANGEAIR	SOPHOMORE	900 CFM	0.25 in-wg	350 CFM	MERV-13	DX	24400.0 Btu/h	19200.0 Btu/h	16.6 IEER	22500.0 Btu/h	3.4	40940.0 Btu/h	21 A	460 V	3	-
VUV-B115	CHANGEAIR	SOPHOMORE	900 CFM	0.25 in-wg	350 CFM	MERV-13	DX	24400.0 Btu/h	19200.0 Btu/h	16.6 IEER	22500.0 Btu/h	3.4	40940.0 Btu/h	21 A	460 V	3	-
VUV-B116	CHANGEAIR	SOPHOMORE	900 CFM	0.25 in-wg	350 CFM	MERV-13	DX	24400.0 Btu/h	19200.0 Btu/h	16.6 IEER	22500.0 Btu/h	3.4	40940.0 Btu/h	21 A	460 V	3	-
VUV-B117	CHANGEAIR	SOPHOMORE	900 CFM	0.25 in-wg	350 CFM	MERV-13	DX	24400.0 Btu/h	19200.0 Btu/h	16.6 IEER	22500.0 Btu/h	3.4	40940.0 Btu/h	21 A	460 V	3	-
VUV-B217	CHANGEAIR	SOPHOMORE	900 CFM	0.25 in-wg	350 CFM	MERV-13	DX	24400.0 Btu/h	19200.0 Btu/h	16.6 IEER	22500.0 Btu/h	3.4	40940.0 Btu/h	21 A	460 V	3	-
VUV-B218	CHANGEAIR	SOPHOMORE	900 CFM	0.25 in-wg	350 CFM	MERV-13	DX	24400.0 Btu/h	19200.0 Btu/h	16.6 IEER	22500.0 Btu/h	3.4	40940.0 Btu/h	21 A	460 V	3	-
VUV-B219	CHANGEAIR	SOPHOMORE	900 CFM	0.25 in-wg	350 CFM	MERV-13	DX	24400.0 Btu/h	19200.0 Btu/h	16.6 IEER	22500.0 Btu/h	3.4	40940.0 Btu/h	21 A	460 V	3	-
VUV-B220	CHANGEAIR	SOPHOMORE	900 CFM	0.25 in-wg	350 CFM	MERV-13	DX	24400.0 Btu/h	19200.0 Btu/h	16.6 IEER	22500.0 Btu/h	3.4	40940.0 Btu/h	21 A	460 V	3	-
VUV-B227	CHANGEAIR	SOPHOMORE	900 CFM	0.25 in-wg	350 CFM	MERV-13	DX	24400.0 Btu/h	19200.0 Btu/h	16.6 IEER	22500.0 Btu/h	3.4	40940.0 Btu/h	21 A	460 V	3	-
VUV-B228	CHANGEAIR	SOPHOMORE	900 CFM	0.25 in-wg	350 CFM	MERV-13	DX	24400.0 Btu/h	19200.0 Btu/h	16.6 IEER	22500.0 Btu/h	3.4	40940.0 Btu/h	21 A	460 V	3	-
VUV-B229	CHANGEAIR	SOPHOMORE	900 CFM	0.25 in-wg	350 CFM	MERV-13	DX	24400.0 Btu/h	19200.0 Btu/h	16.6 IEER	22500.0 Btu/h	3.4	40940.0 Btu/h	21 A	460 V	3	-
VUV-B230	CHANGEAIR	SOPHOMORE	900 CFM	0.25 in-wg	350 CFM	MERV-13	DX	24400.0 Btu/h	19200.0 Btu/h	16.6 IEER	22500.0 Btu/h	3.4	40940.0 Btu/h	21 A	460 V	3	-
VUV-B231	CHANGEAIR	SOPHOMORE	900 CFM	0.25 in-wg	350 CFM	MERV-13	DX	24400.0 Btu/h	19200.0 Btu/h	16.6 IEER	22500.0 Btu/h	3.4	40940.0 Btu/h	21 A	460 V	3	-
VUV-B232	CHANGEAIR	SOPHOMORE	900 CFM	0.25 in-wg	350 CFM	MERV-13	DX	24400.0 Btu/h	19200.0 Btu/h	16.6 IEER	22500.0 Btu/h	3.4	40940.0 Btu/h	21 A	460 V	3	-
VUV-B233	CHANGEAIR	SOPHOMORE	900 CFM	0.25 in-wg	350 CFM	MERV-13	DX	24400.0 Btu/h	19200.0 Btu/h	16.6 IEER	22500.0 Btu/h	3.4	40940.0 Btu/h	21 A	460 V	3	-

Grand total: 34

KEY PLAN



ISSUE DATE: 07/14/23
ISSUED FOR: MEP Pre-Purchase

DRAWN: _____
CHECKED: _____
APPROVED: _____

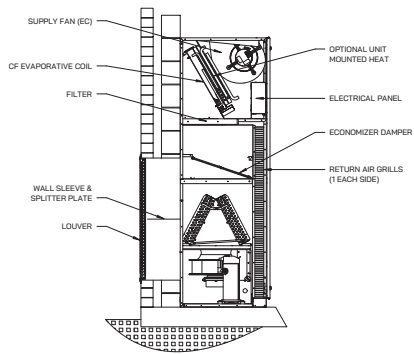
FRENCH ASSOCIATES
 3740 MILL STREET
 MISSISSAUGA, ON L4Z 1K7
 T: 905.666.1372
 french@frenchinc.com
 frenchinc.com

PROJECT:
Wayne RESA
Beacon Day
Treatment Center
Relocation - Phase 1
BP1 MEP
Pre-Purchase

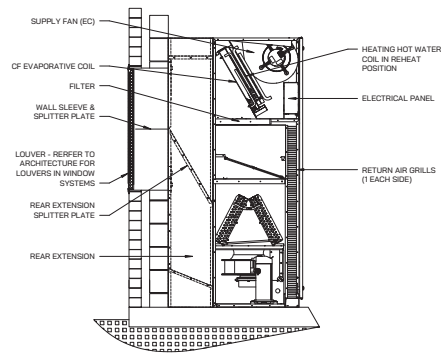
SHEET:
MECHANICAL
SCHEDULES

PROJECT NUMBER:
23.065

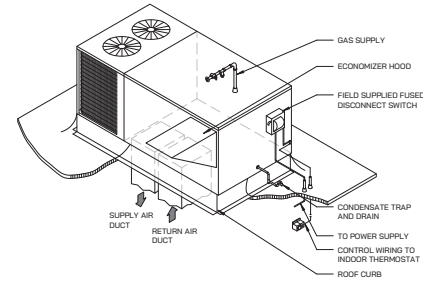
SHEET NUMBER:
M701



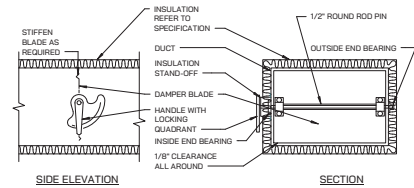
1 VERTICAL UNIT VENTILATOR DETAIL
SCALE: NONE



2 VERTICAL UNIT VENTILATOR DETAIL - W/ REAR EXTENSION
SCALE: NONE

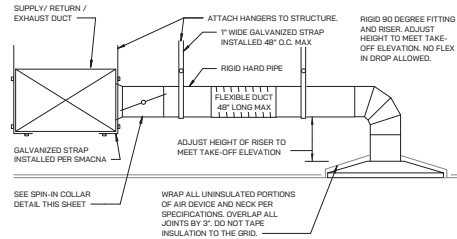


3 POWER ROOF VENTILATOR
SCALE: NONE

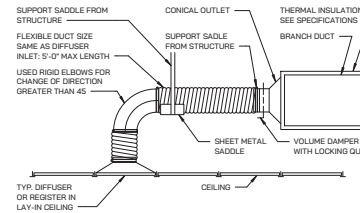


NOTES:
1. DELETE INSULATION STAND-OFF ON DUCTWORK WITHOUT EXTERIOR INSULATION.
2. DETAIL SHOWS SINGLE BLADE DAMPER. DAMPER INSTALLATION SHALL BE SIMILAR FOR MULTI-BLADE DAMPERS AND ROUND DAMPERS.

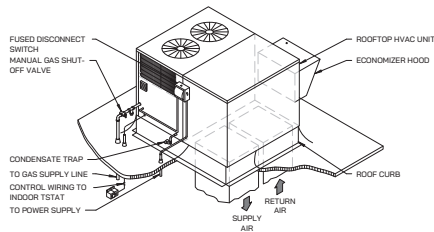
5 VOLUME DAMPER DETAIL
SCALE: NONE



6 ICE MACHINE PIPING
SCALE: NONE



7 FLEXIBLE AIR DUCT CONNECTOR
SCALE: NONE



4 GAS FIRED ROOFTOP HVAC UNIT
SCALE: NONE

KEY PLAN



ISSUE DATE: 07/14/23
ISSUED FOR: MEP Pre-Purchase

DRAWN: _____
CHECKED: _____
APPROVED: _____

PROJECT
Wayne RESA
Beacon Day
Treatment Center
Relocation - Phase 1
BP1 MEP
Pre-Purchase

SHEET
MECHANICAL
DETAILS

PROJECT NUMBER
23.065

SHEET NUMBER

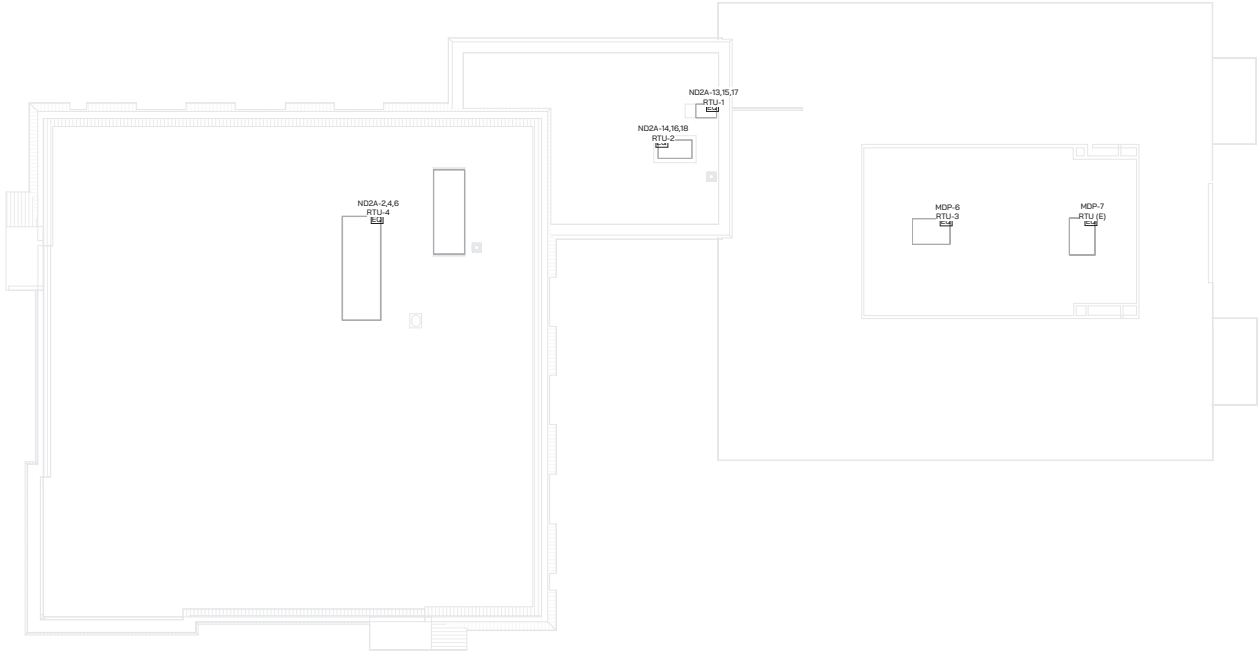
M710

2023.06.05 10:00 AM 23.065-01-MECHANICAL-DETAILS-M710.rvt

KEY PLAN



ISSUE DATE	ISSUED FOR
07/14/23	MEP Pre-Purchase
DRAWN	
CHECKED	
APPROVED	



ELECTRICAL ROOF POWER PLAN
1/16" = 1'-0"

WAYNE RESA ASSOCIATES

FRENCH ASSOCIATES
326 MILL STREET
WILMINGTON, DE 19801
T: 302.656.1372
www.frenchassoc.com

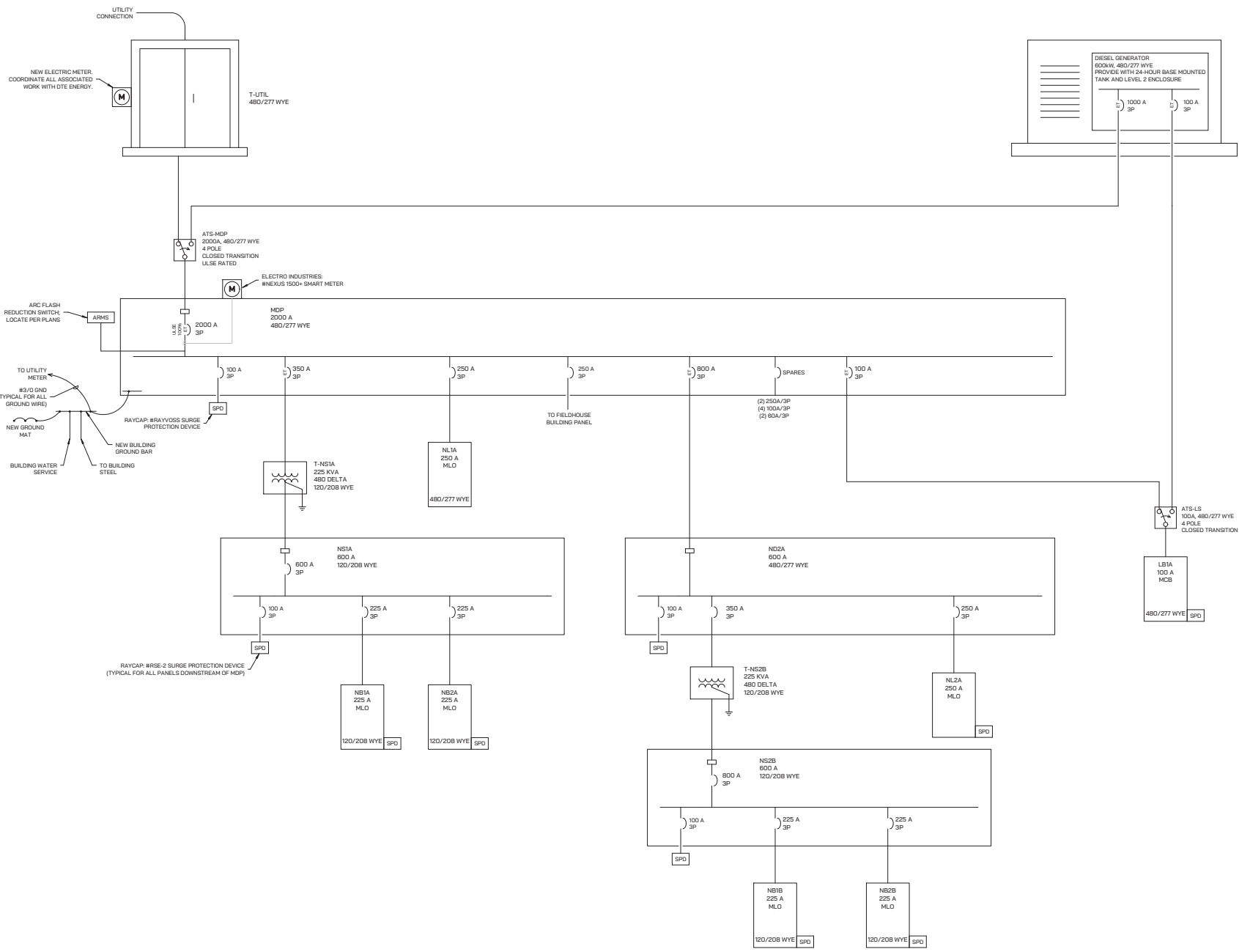
PROJECT
Wayne RESA
Beacon Day
Treatment Center
Relocation - Phase 1
BP1 MEP
Pre-Purchase

SHEET
ROOF POWER
PLAN

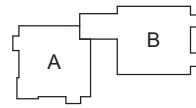
PROJECT NUMBER
23.065

SHEET NUMBER
E130

20250320:03033:01/04/23



KEY PLAN



ISSUE DATE	ISSUED FOR
07/14/23	MEP Pre-Purchase
DRAWN	
CHECKED	
APPROVED	



**324 MILL STREET
ROCHESTER, NY 14610
T: 541.486.1372
franchassociates.com**

PROJECT
**Wayne RESA
Beacon Day
Treatment Center
Relocation - Phase 1
BP1 MEP
Pre-Purchase**

SHEET
**ELECTRICAL
ONE LINE
DIAGRAM**

PROJECT NUMBER
23.065

SHEET NUMBER
E401

1 ELECTRICAL ONE LINE DIAGRAM.cld
SCALE: NONE

2024 09/20 10:50 AM 23.065 001 1/1

