

PBIS Clubs & Student Voice



Chris McEvoy
mcevoyc@resa.net
Kayrl Reynoso
reynosk@resa.net

Wayne RESA
2023-2024

Special Interest Clubs

- Some students lack motivation or a feeling of connectedness at school.
- Participation in a high interest, extra-curricular activity, monitored by an adult, can help the student view school in a more positive way.
- Examples: Student leadership clubs, chess or checkers club, arts, music, sports, student-selected interests, technology, photography, film-making, gardening, etc.



Clubs Promote Engagement and Connection



- Participation in clubs are a great opportunity to practice social skills and develop leadership qualities.
- Entrance criteria for the club must accommodate students at Tiers 2/3.
- **Connections and engagement for students continue to need to be a priority for 2023-2024 as we rebound from the pandemic.**



Livonia-Garfield Community School/Western Wayne Skill Center



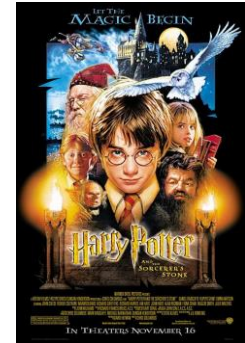
- Music Club
- Coffee Club
- Animal Club
- Holiday Club
- Walking Club
- Art Club
- Games Club
- Sports Club
- Dance Club
- Karaoke Club

Allen Park- Bennie Elementary

- Yoga Club
- Horse Club
- Run Club
- Garden Club
- Cultural Competence Club (C3)
- Play Doh Club
- Show & Tell Club
- STEM Building Club
- Brain Breaks Club
- Card Making Club
- Cheerleading Club
- Mindful Coloring Club
- Equestrian (Horse) Club
- Disney Club
- Puzzle Club
- Service Projects Club



- LEGO Club
- Just Dance Club
- Yoga Club
- Harry Potter Club
- Board Game Club
- Basketball Club
- Comic Book Club
- Directed Drawing Club
- Art Hub Club
- Matchbox Cars Club
- Breakfast Club
- Pet Club
- Joke & Riddle Club
- Costumes & More Club
- Travel Club
- Sports Talk Club





Join the LPMS Prism Club

Prism Club is open to **ANY** student (face to face and online) interested in making a difference, specifically the acceptance and inclusivity of all students at our school.

- ★ Prism Club's goals are to create accepting spaces for all students, raise awareness about special topics, advocate for marginalized groups, make new connections, and have FUN!
- ★ Prism Club is a student-led club, supported by a group of Lincoln Park Middle School staff members.
- ★ Prism Club will meet every Thursday after school from 2:30-3:30.

Our first informational meeting will be on
Thursday, 4/15 from 2:30-3:30 in the media center
See you then!

Lincoln Park Middle School
Lincoln Park High School

- Garden Club
- Watercolor Club
- Art Club
- Board Games Club
- Crochet Club
- Prism Club





PBIS Clubs as Reward Activities

- School offers club activities instead of monthly reward parties.
- Club activities can be offered monthly or every other week.
- Students sign up for a club activity that interests them.
- Club activities occur throughout the building at a specified time, lasting 20-30 minutes.
- Students who do not meet criteria to go to a club of their choice are assigned a social skills club.
- Some schools opt to allow all students to attend clubs as a means of building community and engagement.



Homework Club

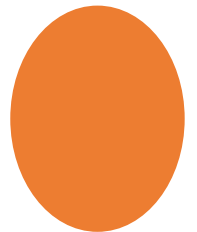
- **Students who chronically do not complete their homework may benefit from a scheduled time and place for them to work on homework at school.**
- **The homework club should be monitored by an adult. Assistance can be provided as appropriate.**
- **Homework club can be scheduled before or after school, or during free periods of the day.**
- **Peer and/or adult tutoring can be included in the homework club.**
- **Some students will benefit from the combination of check in/check out and homework club.**

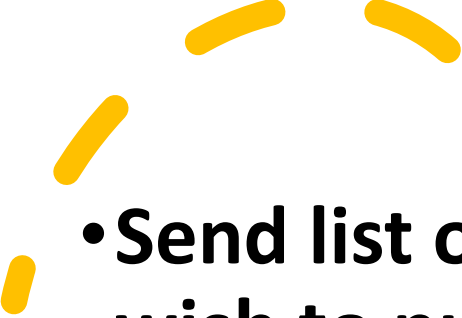


Newcomers Club

Lori Newcomer Ph.D.

- **Newcomers Club is a structured program that pairs new student with established students.**
- **The student is given orientation materials describing “tips for success”, helpful contacts, etc.**
- **School-wide behavior expectations are taught.**
- **Adults make extra effort to provide positive contact and positive reinforcement for new student.**
- **Family contact is made by school staff.**



- 
- **Send list of items you wish to purchase to Chris or Kayrl for pre-approval.**
 - **mcevoyc@resa.net or reynosk@resa.net**
 - **Up to 50% of PBIS funds may be used toward club materials.**



Using PBIS
Funds for
Clubs

Student Voice: How can students provide leadership for PBIS?

- Bully prevention – See Scott Ross, Bully Prevention in PBS, APBS, March 2017
- “Use another Word” Springfield HS
<https://www.youtube.com/watch?v=GM-nWXz1YHo>
- Poster Designs
- Make Videos
- Ambassadors of the School
- Student Mentors
- Attend PBIS meetings



PBIS

