



WAYNE **RESA**
Leading... Learning for All

SERVICE
LEADERSHIP
COLLABORATION
EXCELLENCE

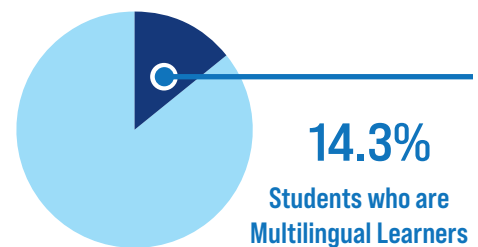
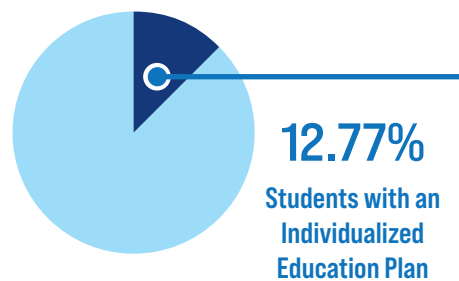
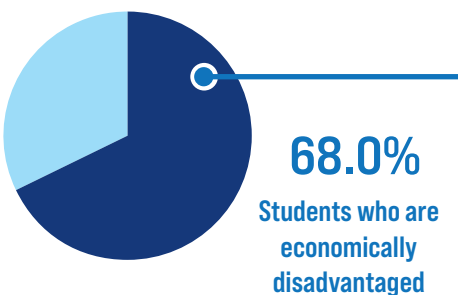
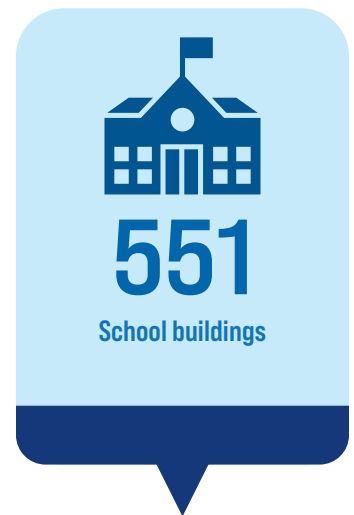
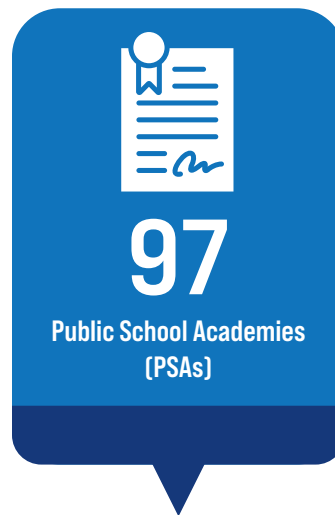
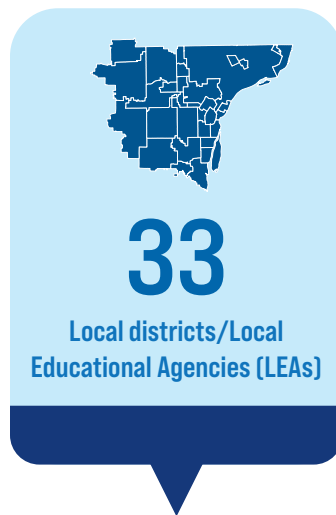
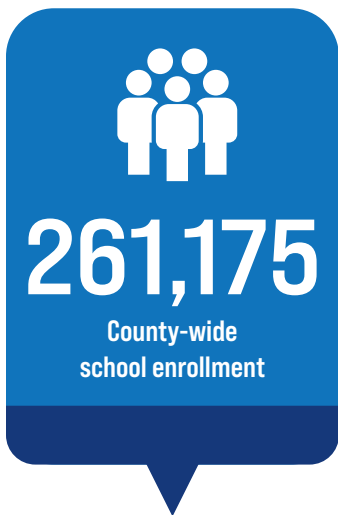
WAYNE COUNTY REGIONAL
EDUCATIONAL SERVICE AGENCY

**2023-2024
SERVICES
SUMMARY**

Wayne Regional Educational Service Agency, or WRESA, offers a wide range of services and support to our 33 school districts and 97 public school academies across Wayne County. Our team of nearly 300 experts works diligently to provide personalized support that is essential to improving student achievement and advancing educational outcomes throughout Wayne County. Our comprehensive range of services includes professional development for educators, IT programs and services, administrative support for school districts, and much more. We are proud to serve our communities county-wide and celebrate our achievements together with our students, their families, our colleagues and community members for the 2023-2024 school year.



WAYNE COUNTY, MICHIGAN: BY THE NUMBERS



BUDGET 2023-24



\$35,734,000

Operating Budget



\$206,457,500

Act 18 Special Education



\$90,214,100

Wayne County
Regional Enhancement Millage

PROFESSIONAL DEVELOPMENT

503

Courses offered

366

Courses with
SCECHs offered

230

Courses conducted
virtually

10,252

Total participants





In my 26 years of being an educator, the Boys College Summer Literacy Institute literacy program led by Wayne RESA and Oakland Schools is one of the best examples of compelling instruction that led to notable learning achievement. Interesting and engaging content along with diverse representation in the classroom matters.

—Tracy Bryant, Principal,
Rawsonville Elementary School



EARLY CHILDHOOD

- **9,591** Total children in Wayne County Great Start Readiness early childhood classes in Wayne County
- **579** Total classrooms in Wayne County
- **\$94,204,416** Total allocation in Wayne County
- **4,580** Enrolled children in Detroit
 - **16** Detroit-based PSAs
 - **1** Detroit-based LEA
 - **58** Detroit-based Community-Based Organizations (CBOs)
 - **278** Detroit-based classrooms

LITERACY

- **51** Early Literacy Coaches on Special Assignment funded by Wayne RESA
- **188** District instructional coaches in the WRESA coaching network

- **25** Days of professional development for Literacy Coaches
- **59** Professional development sessions focused on high quality literacy instruction
- **20** Districts represented in the Wayne County Literacy Learning Network Advisory Council
- **6,597** Students across **50** sites engaged in summer STEM literacy camps
- **200** Students across **8** sites engaging in Boys College Summer Institute
- **5** National speakers featured within our Equity-Focused Literacy Leaders Series with **200** educators participating
- **924** Educators trained in Language Essentials for Teachers of Reading and Spelling (LETRS)
- **159** Professional development recordings with more than **38,000** online views

MULTILINGUAL LEARNER SUPPORT

- **36,991** Multilingual Learners in Wayne County
- **213** Educators engaged in Sheltered Instruction Observation Protocol® (SIOP)
- **178** Participants from Districts and PSAs represented in Wayne County Multilingual Learning Network

CAREER COUNSELING SERVICE

- **29** High schools serviced
- **7** Career Counselors
- **1,689** Students referred
- **698** Students with a post-secondary plan



CONTENT AREA SUPPORT

► Mathematics

- **48** Educators engaged in the Elementary Mathematics Leaders Network
- **18** Educators engaged in the Secondary Mathematics Leaders Network
- **26** Early Mathematics Coaches on Special Assignment representing **22** districts
- **46** Mathematics Coaches engaging in the Wayne County Coaching Network

► Science

- Provided Science Leaders Learning Network to **136** districts and PSAs

► Social Studies

- Provided Social Studies Leaders Learning Network to **136** districts and PSAs



► Instructional Technology

- Provided Instructional Technology Leaders Network Opportunities to **136** districts and PSAs
- **44** Educators engaged in the Virtual Academy Leaders Network
- **178** Educators engaged in the WRESA Maker Network
- **8** District educational leaders providing guidance and input for the AI Exploratory Committee

► Library / Media

- **165** Educators engaged in the Library Media Leaders Network

► Safe & Healthy Schools

- **258** Educators trained in Transforming Research into Action to Improve the Lives of Students (TRAILS) programming
- **143** Educators trained in Michigan Model for Health Social and Emotional Learning Modules
- **228** Educators and parents trained in Question, Persuade, and Refer (QPR) Suicide Prevention program

- **159** Educators trained in Comprehensive School Threat Assessment Guidelines (CSTAG) Levels 1 and 2
- **26** Wayne RESA workshops approved for Social Work Continuing Education Credits (SWCECs)
- **19** LEAs and PSAs benefitting from School Nurse Consulting Services from our **3** School Outreach Nurses
- **1,301** Student care coordination interactions delivered by our **3** School Outreach Nurses
- **15** LEAs and PSAs benefitting from 31n(6) and Wayne County Executive Office funding to provide new or expanded mental health supports and services to general education students with mild to moderate mental health needs
- **15** LEAs and PSAs benefitting from Health Resource Advocate (HRA) funding to address existing and emerging student mental and physical health issues resulting from the COVID-19 pandemic
- **13** LEAs and PSAs benefitting from Wayne County Executive Office funding to support Care Solace Care Coordination Services





At the Lincoln Park Public Schools, we are grateful for the Wayne RESA's Operations & IT Infrastructure team's seamless management of the renovation of our Beacon Day Treatment building. Thanks to their dedication, we are excited to welcome our students into a state-of-the-art center to support them reach their highest potential.

—Terry Dangerfield, Superintendent,
Lincoln Park Public Schools



DISTRICT/SCHOOL CONTINUOUS IMPROVEMENT

► Continuous Improvement

- 130 Districts and PSAs receiving direct Continuous Improvement Support (MICIP)
- 142 Attendees of MICIP technical support (monthly engagement)

► Michigan Department of Education (MDE) Accountability Identification

- 90 Comprehensive Support and Improvement (CSI) schools
- 50 Targeted Support and Improvement (TSI) schools
- 28 Additional Targeted and Improvement (ATI) schools

► School Improvement Facilitation for CSI Schools

- 38 Staff providing services
- 53 Districts serviced
- 174 Schools serviced
- >13,842 hours of direct support to schools

SPECIAL EDUCATION

► Special Education Snapshot

- 36,244 Wayne County students with an Individualized Education Plan
- 9 LEA/PSA Directors Administrative Meetings

► Act 18 Support for Programs and Services

- 5,999 Students in center-based programs
- 684 Students with paraprofessional support
- \$25,943,155 Allocated for paraprofessional support

► General Supervision and Accountability (GSA)

- 99 GSA monitoring activities completed
- 277 Student-level Corrective Action Plans
- 212 Student record reviews
- 7 Intensive district support on-site

► Early On® (Birth to Age 3)

- 5,995 Referrals processed
- 2,639 Evaluations completed
- 4,722 Children who received Early On services

► Assistive Technology

- 1,826 Students who received assistive technology support and devices

► Parent Advisory Committee (PAC)

- 41 Parents served on the Parent Advisory Committee, meeting 7 times per year

► Positive Behavioral Interventions and Supports (PBIS)

- 330 Schools with WRESA PBIS agreements
- 150 Wayne County PBIS Coaches
- 51 Consultations and wrap-around services





SHARED OPERATIONAL SERVICES

► Business services

- 37 Districts/PSAs participating in Edustaff substitute teacher services

► Technology Services (IT)

- 64 Districts/PSAs supported with SMART consortium business office information system
- 74 Districts/PSAs supported with MISTAR consortium student information system
- 32 Districts/PSAs using the consortium assessment system
- 40 Districts/PSAs using consortium library information system
- 22 Districts/PSAs using consortium-hosted Moodle learning management system
- 54 Districts/PSAs using consortium emergency communication system

- 27 Leased fiber optic connections to schools
- 12 Districts/PSAs receiving network management Field Services
- 6 Districts/PSAs receiving supplemental technical staffing services

► Transportation Services

- 79 Districts/PSAs using Polyplot software
- 1,467 Bus drivers and transportation supervisors trained

► Application Field Services

- 11 Districts/PSAs receiving payroll-related field services
- 2 Districts/PSAs receiving student data-related field services



The Wayne RESA IT Solutions team provided exceptional support to Livonia Public Schools during our transition between MISTAR support staff. Their timely and effective assistance ensured that our operations remained smooth, allowing us to focus on our students' needs without disruption.

—Tim Klan, Administrator of Information and Instructional Technology, Livonia Public Schools





LEADERSHIP

► Wayne RESA Leading the Way

Wayne RESA's vision statement is **"Leading...Learning for All."** We believe that Leadership is the foundation of our organization. Below are some examples of Wayne RESA's demonstrated leadership:

- Founding member of the K-12 Alliance, a leading voice for public education in Michigan
- Great Lakes Equity Project/Midwest Equity Assistance Center partner
- Member of the General Education Leaders Network (GELN)
- Member of the Special Education Instructional Leaders Network (SEILN)
- Standing member and fiscal agent for the Great Start Collaborative–Wayne County, the county-wide partnership supporting early childhood development
- MiLEAP: Michigan Department of Lifelong Education, Advancement, and Potential (MiLEAP) Pre-K for All leadership
- Founding member of the School Finance Research Collaborative
- Member of Michigan Education Technology Leaders (METL)
- Advisor to Michigan State Education Network (SEN)
- Member of Michigan Collaboration Hub (MiCH)
- Member of Center for Educational Performance and Information (CEPI) Data Collections Advisory
- Member of the Early Childhood Administrators Network (ECAN)
- Lead the Wayne County Communications Consortium
- Member of the National and Michigan School Public Relations Associations (NSPRA, MSPRA) and Intermediate School District Public Relations (ISDPR) Network
- Lead Intermediate School Districts (ISDs) for the development of the Talent Together consortium
- Lead ISDs for the School Infrastructure Projects (Sec. 11y)



*Dr. Daveda J. Colbert
Superintendent, Wayne RESA*

► Leadership Opportunities Provided

Wayne RESA offers professional development to leaders in the following areas:

- Curriculum Administrators
- Adult Education Administrators
- Multilingual Network
- Library Media Leaders
- Instructional Technology Leaders
- Literacy Leaders
- Math Leaders
- Continuous Improvement Leaders for MICIP Leaders/Teams
- Science Leaders
- Social Studies Leaders
- Wayne County State and Federal Program Leaders
- Elementary and Secondary Principals Network
- Alternative School Leadership Network
- Parent Advisory Committee
- Wayne Future Leaders Initiative
- Learning Series for Leaders
- Trauma-Informed Leadership
- New Principal/Assistant Principal Academy
- New Teacher Academy
- School Safety Comprehensive School Threat Assessment Guidelines (CSTAG) and Behavioral Threat Assessment and Management (BTAM) Leadership
- Wayne County Homeless Liaisons
- Wayne County Foster Care Liaisons
- Artificial Intelligence Advisory Committee
- Attendance Collaborative Seminar
- New and Aspiring Curriculum Leaders
- Equity Literacy Leaders

“

The WRESA Human Resources leadership has been an invaluable resource for all of Wayne County HR administrators, but especially to those newer to the role. Kelly Bohl and her team are very accessible and quick to answer questions and provide guidance when treading new waters.

—Judy Nachman, Executive Director of Human Resources and Labor Relations, Redford Union Schools

”



DEVELOPING PARTNERSHIPS

▶ Great Lakes Equity Center/Midwest and Plains Equity Assistance Center

- Developing internal capacity (team engagement)
- Systems Assessment of Equity and Justice in Education (District Partners/Engagement)

▶ Great Start Collaborative

- School Readiness Advisory Committee (Parent/Teacher Engagement)
- Talking in Teaching with Elaine Koons (Presenter at advisory meeting on Talk, Read, Sing)

▶ PBS/DPTV (Public Broadcasting System/Detroit Public Television)

- Family Engagement initiative

▶ Wayne County Head Start

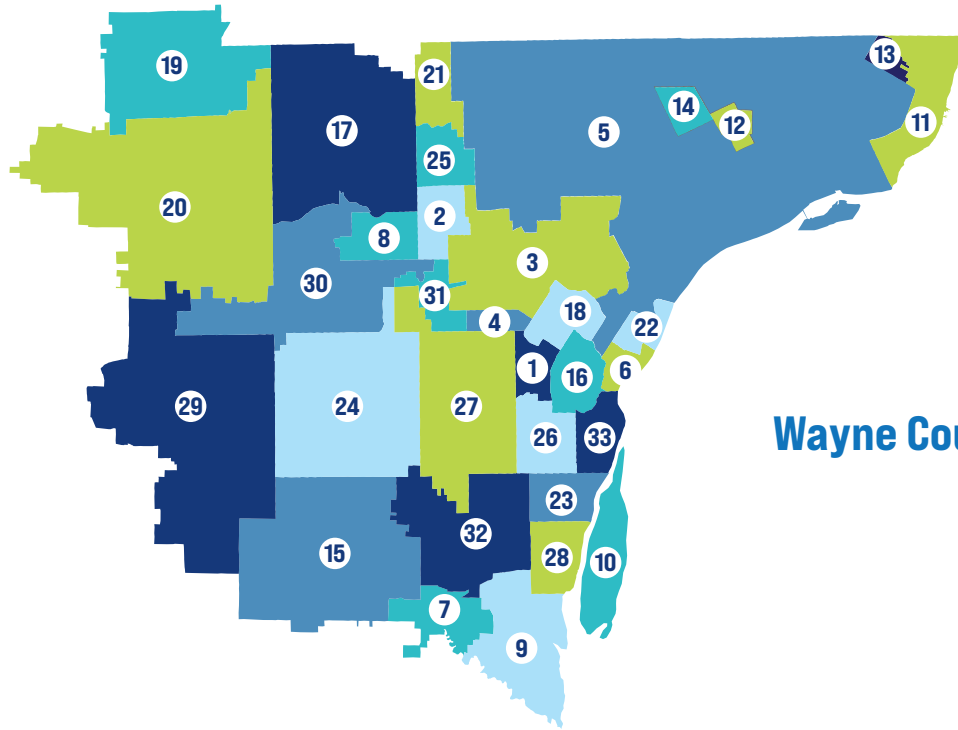
- Collaborative agreement to serve 4-year-old children



Wayne RESA serves on the Southeast Michigan Community Alliance's (SEMCA) leadership and implementation teams, collaborating on career pathway planning, and guiding our work with education strategies to support secondary success. Wayne RESA is an exemplary partner in helping amplify and strengthen our work, and it's a partnership that is critical to our workforce efforts across our region!

—Deborah Taylor, Workforce Programs Manager, SEMCA Michigan Works!





Wayne County, Michigan

ENROLLMENT

MAP	ENTITY	2022-23	2023-24
—	Wayne County Michigan, county-wide	260,891	261,175
1	Allen Park Public Schools	3,678	3,691
2	Crestwood School District	4,017	4,154
3	Dearborn City School District	19,921	20,068
4	Dearborn Heights School District No. 7	2,526	2,447
5	Detroit Public Schools Community District	48,350	47,646
6	Ecorse Public Schools	1,120	1,119
7	Flat Rock Community Schools	1,748	1,804
8	Garden City Public Schools	3,260	3,202
9	Gibraltar School District	3,658	3,657
10	Grosse Ile Township Schools	1,591	1,656
11	Grosse Pointe Public Schools	6,486	6,611
12	School District of the City of Hamtramck	3,053	3,114
13	The School District of the City of Harper Woods	2,525	2,538
14	Highland Park City Schools	0	0
15	Huron School District	2,576	2,553
16	School District of the City of Lincoln Park	4,909	4,894
17	Livonia Public Schools School District	13,275	13,404

MAP	ENTITY	2022-23	2023-24
18	Melvindale-Northern Allen Park Schools	2,928	2,951
19	Northville Public Schools	7,129	7,081
20	Plymouth-Canton Community Schools	16,251	16,364
21	Redford Union Schools, District No. 1	2,382	2,301
22	School District of the City of River Rouge	2,428	2,448
23	Riverview Community Schools	2,831	2,847
24	Romulus Community Schools	2,271	2,441
25	South Redford School District	3,621	3,733
26	Southgate Community School District	3,331	3,238
27	Taylor School District	5,419	5,513
28	Trenton Public Schools	2,505	2,479
29	Van Buren Public Schools	4,313	4,326
30	Wayne-Westland Community School District	9,380	9,463
31	Westwood Community School District	1,488	1,427
32	Woodhaven-Brownstown School District	5,318	5,441
33	School District of the City of Wyandotte	4,423	4,514
—	All Public School Academies, combined	62,136	62,050



SERVICE
LEADERSHIP
COLLABORATION
EXCELLENCE

Wayne RESA

33500 Van Born Road • Wayne, MI 48184

734.334.1300 • 734.334.1620 FAX

www.resa.net

Board of Education

James S. Beri • Mary E. Blackmon

Danielle Funderburg • Lynda S. Jackson • James Petrie

Superintendent

Daveda J. Colbert, Ph.D.

Wayne RESA is an equal opportunity employer.