

Early Childhood Digest

The Latest Early Childhood Developments by Wayne RESA



SERVICE
LEADERSHIP
COLLABORATION
EXCELLENCE



April 11, 2025

Early Childhood Services Department at Wayne Regional Educational Service Agency (Wayne RESA)

The Early Childhood Services Department oversees high-quality preschool education opportunities across Wayne County to include the Great Start Readiness Program (GSRP) for eligible four-year-old children and the Strong Beginnings pilot for eligible three-year-old children.

Email: EarlyChildhood@resa.net

Website: <https://www.resa.net/teaching-learning/early-childhood>

Location: [33500 Van Born Road, Wayne, MI, USA](#)

Phone: [734-334-1312](tel:734-334-1312)

From Libby Rogowski, Executive Director of Early Childhood

Dear Wayne County Early Childhood Partners,

Thank you for your contributions and steadfast dedication to GSRP as Michigan continues to offer amazing opportunities for 4-year-olds and their families! This is an exciting time for Early Childhood!

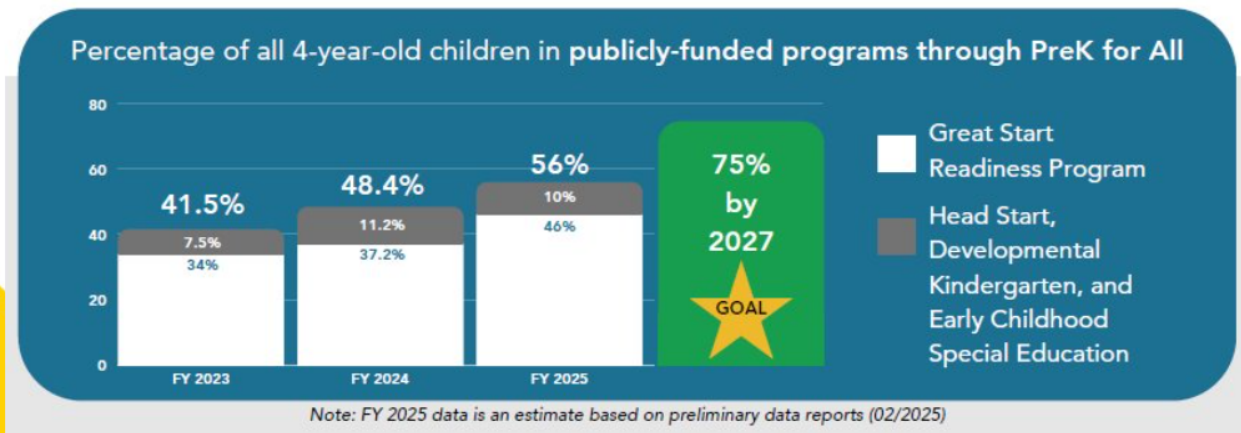
PreK for All aims to enroll 75 percent of four-year-old children, which would make Michigan the top enrolling state in the country! This ambitious goal means that the state must plan to serve a total



of 88,500 of the state's 118,000 four-year-old children in publicly funded programs by 2027.

A big thank you to our partners, who have also been focused on outreach to increase program participation and child enrollment in PreK for All throughout Michigan!

Journey to PreK for All



Set your child up
for **success.**

ACTION STEPS

Action Steps

1. **GSRP Enrollment** as of April 11th DUE April 16th, 2025
 - Go to [Enrollment](#)

2. Teachers and Directors who use **GOLD**: Attend the **Spring Checkpoint for Teachers** webinar on Tuesday, April 15th at 2:00 pm.

- Go to [Reporting & Monitoring/Assessment](#)

3. For Providers who did not meet full enrollment: **Amended Budgets** are DUE to WCRESA on Wednesday, April 30th, 2025

- Go to [Fiscal](#)

4. **Main Operations and Transportation Mid-Year Reviews** are DUE April 30th, 2025

- Go to [Fiscal](#)

5. **Transportation Verification** is DUE Wednesday, April 30th, 2025.

- Go to [Fiscal](#)
-

Enrollment

[Click here for ENROLLMENT](#)

Fiscal

[Click here for FISCAL](#)

Reporting & Monitoring/Assessment

[Click here for REPORTING & MONITORING/ASSESSMENT](#)

Social Emotional Support

[Click here for SOCIAL EMOTIONAL SUPPORT](#)

Resources

[Click here for RESOURCES](#)

GSRP Monthly Leadership Connection



SERVICE
LEADERSHIP
COLLABORATION
EXCELLENCE



GSRP MONTHLY LEADERSHIP CONNECTION

WHO: ALL DIRECTORS - LEA, PSA,
CBO, ECC CONSULTANTS, AND ECS
CONTRACTORS



MAY 8, 2025
JUNE 12, 2025

*Mark
YOUR
Calendar!*



1:00 -2:00 PM



VIRTUAL

IF YOU ARE UNABLE TO ATTEND, PLEASE HAVE A BACKUP
PLAN FOR YOUR PROGRAM TO HAVE REPRESENTATION.



**HIGH
PRIORITY
REQUIREMENT!**

Our Mission

Wayne RESA is committed to leadership through service and collaboration for excellence in teaching and learning for all.

Our Vision

Leading ... Learning for All.

Our Beliefs

We believe Leadership is the foundation of our organization

We believe Service is the core of our work

We believe Collaboration is essential to our success

We believe in the pursuit of Excellence



SERVICE
LEADERSHIP
COLLABORATION
EXCELLENCE

Set your child up
for success.

FindPreK.org



Wayne RESA SERVICE
LEADERSHIP
COLLABORATION
EXCELLENCE

MILEAP

These materials were developed
under a grant awarded by the
Michigan Department of Lifelong
Education, Advancement,
and Potential.

FindPreK.org

جهز طفلك
لتحقيق النجاح



MILEAP

نحن نطور مهارات القدرات في مرحلة الطفولة المبكرة
مستعدة من وزارة التعليم والتدريب
مبنى الجدة والتقدم والمهارة



Prepare a su hijo
para el éxito.

FindPreK.org



SERVICE
LEADERSHIP
COLLABORATION
EXCELLENCE

MILEAP

Estos materiales fueron desarrollados según una
subvención otorgada por el Departamento de
Educación, Avance y Potencial Vealida.



Wayne RESA Early Childhood

Wayne is using Smore to create beautiful newsletters



SERVICE
LEADERSHIP
COLLABORATION
EXCELLENCE



Enrollment

Attn: CBOs End of Program Review



SERVICE
LEADERSHIP
COLLABORATION
EXCELLENCE



*Attn: CBOs
Join us for the*

**MISTAR-Q END OF PROGRAM
EARLY CHILDHOOD REVIEW
MAY 9, 2024
9:00AM - 10:30AM**

Register (in advance) on Zoom:
[https://resa-
net.zoom.us/meeting/register/py.
P2uvLYSz-oeg69ZhPoFQ](https://resa-net.zoom.us/meeting/register/py-P2uvLYSz-oeg69ZhPoFQ)



[Click Here to Register](#)





2024-2025 Fiscal Year Enrollment

ENROLLMENT REVIEW

schedule

COLLECTION DATE	COLLECTION PERIOD	ADDITIONAL DATES ADDED
APRIL 16	GSRP ENROLLMENT AS OF FRIDAY April 11, 2025	UP NEXT!
MAY 21	GSRP ENROLLMENT AS OF FRIDAY May 16, 2025	

****CBO PROVIDERS MUST HAVE CURRENT AND ACCURATE DATA IN MISTAR BY THESE DATES****



Enrollment Updates

2025-2026 Fiscal Year

1. Students that will turn four in the gap window, September 2 - December 1, may be enrolled on or after September 2nd and after all age-eligible students are enrolled.
2. Any student with a current Individualized Education Plan (IEP), regardless of income and recommended placement, should be prioritized in the lowest bracket, 0-50% of the FPL.
3. Over-income students, families whose Federal Poverty Level (FPL) is at or above 401%, may be enrolled on or after May 1, 2025.
 1. Just as income-eligible students, over-income students should be prioritized based on their FPL percentage.

2. Over-income students do not have to have any additional Eligibility Factors (EF) to qualify for GSRP.
3. If the student has any EFs they should be prioritized over students with no EFs.
4. Programs will hold 10%, 1-2 students per classroom, of their allocation for students that are income-eligible, 0-400% of the FPL until September 1, 2025

Please see the website for all Enrollment and Recruitment documents and resources found under **Recruitment and Enrollment** then **2025-2026 Enrollment**:

Wayne RESA GSRP Website

The screenshot displays the Wayne RESA GSRP Website. The header includes the Wayne RESA logo (Service Leadership Collaboration Excellence) and navigation links: TRANSLATE, ABOUT, EMPLOYMENT, and social media icons. A secondary navigation bar lists: Administrative Support, Educational Resources, Early Education, Special Education, Professional Development, and Family & Community. Below this, a tabbed interface shows 'Recruitment & Enrollment' as the active tab. The main content area is titled 'Recruitment Documents' and includes links for 'Recruitment Ideas' and 'Recruitment Log'. A dropdown menu for '2024-2025 Enrollment' is visible. The '2025-2026 Enrollment' section is expanded, showing a list of documents under three sub-headings: '2025-2026 Enrollment File', '2025-2026 Family Engagement File', and '2025-2026 Guidance Documents'. The 'Head Start' section is also visible at the bottom.

Wayne RESA SERVICE LEADERSHIP COLLABORATION EXCELLENCE

TRANSLATE ABOUT EMPLOYMENT

Administrative Support Educational Resources Early Education Special Education Professional Development Family & Community

Family Resources Program Resources Early Childhood Specialists / Consultants **Recruitment & Enrollment** Additional Resources

Recruitment Documents

[Recruitment Ideas](#)
[Recruitment Log](#)

2024-2025 Enrollment

2025-2026 Enrollment

2025-2026 Enrollment File

- [Enrollment Training Slides](#)
- [Interest Form \(Optional\)](#)
- [Interest Form: Google Form Version \(Optional\)](#)
- [GSRP Intake Application - English](#)
- [GSRP Intake Application - Spanish](#)
- [GSRP Intake Application - Arabic](#)
- [Wayne County Child Record Review](#)
- [LARA Child Information Record - English](#)
- [LARA Child Information Record - Spanish](#)
- [LARA Child Information Record - Arabic](#)
- [LARA Health Appraisal \(2 pages\)](#)
- [LARA Written Information Packet Documentation](#)

2025-2026 Family Engagement File

- [Individual Development Plan \(IDP\) \(2 pages\) - Home Visits](#)
- [Individual Development Plan \(IDP\) \(2 pages\) - Family Conferences](#)
- [Family Contact Form](#)
- [Family Contact Form: Google Form Version](#)
- [Partnering on Child Development \(Optional\)](#)

2025-2026 Guidance Documents

- [Early Childhood Program Overview](#)
- [Eligibility Factors Defined](#)
- [Income Eligibility Guidelines](#)

Head Start

- [Head Start Locator](#)
- [Federal Poverty Level Calculator](#)
- [Head Start Referral Process](#)
- [Early Childhood Program Overview](#)

CBOs ONLY: Pre-Enrollment/Automated Referral Process

CBO Pre-Enrollment Referral Process

2025-2026 Fiscal Year Enrollment Training



2025-2026 Enrollment Training.pdf

Download
5.7 MB

Eligibility Factors Guidance



2. Eligibility Factor and Enrollment GuidancePDF.pdf

Download
415.1 KB



REMINDER

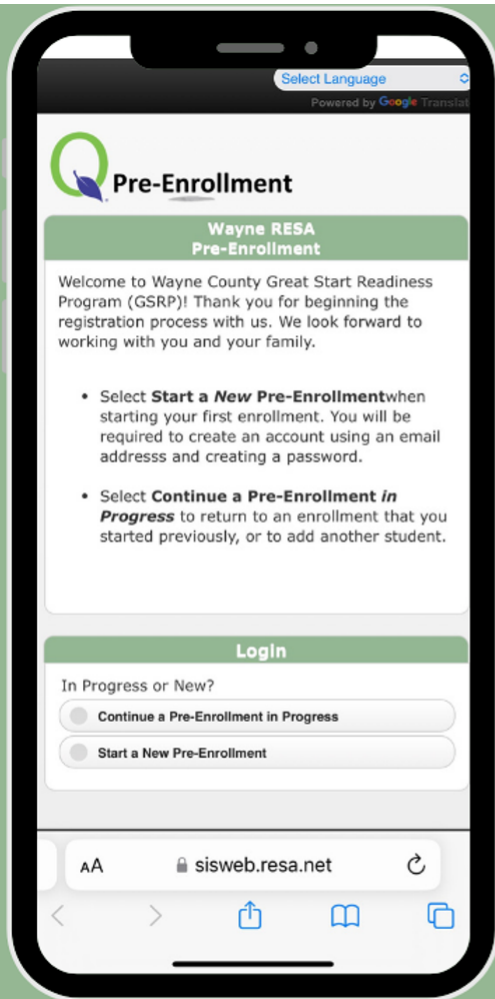
We are no longer using MiECC
for GSRP in Wayne County.

CBO providers should use MISTAR for
all enrollment functions -
referrals, eligibility verification,
class assignments, and daily attendance.



<https://sisweb.resa.net/RESAEarlyChildhood/PreEnrollment>

MISTAR Pre-Enrollment



<https://sisweb.resa.net/RESAEarlyChildhood/PreEnrollment>

MISTAR Service Desk

How do you submit a ticket?

- Users will submit, update, and manage tickets through the [MISTAR Customer Service Portal](#).
- Users will receive email notifications for ticket updates and must access the ticket portal to view detailed communications or respond to a ticket.
- Users may continue to call the Service Desk Help Line at 734-334-1870 to create a ticket.

If you have any questions or require assistance, please contact the Service Desk by [creating a service ticket](#) or calling 734-334-1870.



MISTAR_Early Childhood Report_HOW TO.pdf

Download

199.3 KB



Secure File Request_ HOW TO.pdf

Download
422.9 KB

CBO MISTAR Training Slides

2025-2026 State of Michigan PreK for All Digital Toolkit

Digital Toolkit



Wayne RESA Early Childhood

Wayne is using Smore to create beautiful newsletters



SERVICE
LEADERSHIP
COLLABORATION
EXCELLENCE



Fiscal

Fiscal Reminders

Count Letters

Count letters will be emailed to providers on Tuesday, April 15, 2025. It's important to note the CEPI determines student counts, not WCRESA.

For Providers who did not meet full enrollment:

1. Payments will be reduced for the upcoming April 2025 payment.
2. Budgets will be reopened Friday, April 11, 2025, for edits.
3. Providers need to reallocate funding to match new contract amounts
4. Amended Budgets are due to WCRESA on Wednesday, April 30, 2025

Questions or Concerns – Email Aaron Pressel and Lateefah Scott at PRESSA@RESA.NET and SCOTTL@RESA.NET

Budget Amendments

Please note that if you wish to change your budgets due to a change in your expected expenses, all budgets will be reopened on Friday, April 11, 2025 – Wednesday, April 30, 2025. Once determined that a budget amendment is necessary, please send an email to pressa@resa.net and scottl@resa.net as well as your assigned P-ECC.

MID-YEAR REVIEW

Main operation and transportation mid-year review **due by Wednesday April 30th**

Mid-Year Review

Mid-Year Reviews have been extended and are now due April 30, 2025, as a reminder the Mid-Year Review tab is located in the Main Budget Google Folder, following the March ledger tab. If you need assistance with completing the review, please don't hesitate to contact your P-ECC.

Transportation Verification

The fiscal team is ready to begin the Transportation Verification process. Which will involve collecting information to evaluate current and future transportation operations. Please use the link provided <https://forms.gle/Mr8mukAG9srhqfvgZ> or the link that was emailed to complete the Transportation Verification.

Transportation Verification is due Wednesday, April 30, 2025.

Reminder - Expense Ledgers are Year-to-Date

Please note that the format for the ledgers has changed from last program year. **Ledgers are now organized to report expenses Year-to-Date**, meaning that each ledger will include all the previous month's expenses. Please also note that providers are being asked to report their end of month enrollment in each ledger. Ledgers will be reviewed by our finance team and providers may be asked to provide documentation for various expenses. Finally, for LEAs/PSAs that utilize WCRESAs SMART system, completing ledgers in the google budget document are still recommended, but not required.

Failure to complete ledgers in a timely manner will result in the following consequences:

- If the main operations ledgers are submitted **one month late**, **10%** of the monthly allocation will be deducted from the next payment distribution.
 - If the main operations ledgers are submitted **two months late**, **25%** of the monthly allocation will be deducted from the next payment distribution.
 - If the main operations ledgers are submitted **three months late**, **all future payments will be held, until reporting requirements have been met.**
-

Reminder – Bookkeeper/Accountant Requirement

As a reminder, please note that all providers must have an assigned bookkeeper or accountant to assist them with their finances. While WCRESA has not placed any restrictions on who the provider may choose to utilize, it is expected that all ledgers, budgets, and other financial documents will be reviewed or completed by this person. Please note that WCRESA may require that the provider take specific steps if budgets and ledgers are not completed on time or correctly on multiple occasions.

Main Operations Expense Ledgers Review Process

When reviewing Main Operations expense ledgers, we are primarily looking at the following:

- Is the ledger signed and dated by an authorized representative?
 - Are all expenses listed in the correct line item by object code and are expenses being tracked year-to-date?
 - Do all employees with wages listed also have benefits?
 - Do the wage and benefits amount align with the staff information section of the budget?
 - Has the number of children enrolled been provided in the ledgers?
 - Do all line-item expenses have a description?
 - Are there any line items that are over-budget?
 - Do the ledgers contain any unapproved expenses?
 - Is the provider expending money as expected based on the planned budget?
 - Are the ledgers calculated using Year-to-date method, opposed to Month-to month.
-

Transportation Ledgers

Transportation ledgers, as with Main Operations Ledgers, are due to be completed by the 15th of the month following the month in question. Failure to submit ledgers by this date will impact the date by which funds will be reimbursed. Please note that when reviewing transportation ledgers, we will be looking specifically at the following items:

- Is the ledger signed and dated by an authorized representative?
- Are all expenses listed in the correct line item by object code?
- Do all employees with wages listed also have benefits?
- Has the number of children transported been provided in the ledgers?
- Do all line-item expenses have a description?
- Are there any line items that are over-budget?



Form_for_gsrp_public_transportation_reimbursement.pdf

[Download](#)
92.1 KB

2024-2025 GSRP PAYMENT SCHEDULE	
MONTH	PAYMENT DATE
October	10/25/2024
November	11/29/2024
December	12/27/2024
January	1/31/2025
February	2/28/2025
March	3/28/2025
April	4/25/2025
May	5/30/2025
June	6/27/2025
July	7/25/2025
August	8/29/2025



2024-2025 GSRP Payment Schedule (1).pdf

2024-2025 GSRP Payment Schedule

[Download](#)
476.5 KB

GSRP BUDGET SCHEDULE

Effective July 2024

**Contract dates: July 1st to June 30th

**Grant Funds & Reports: October 1st to September 30th

GSRP Inventory	September 16, 2024
2024-2025 Budgets	September 16, 2024
2023-2024 Final Expense Report	October 16, 2024
(FER) 2023-2024 Carryover Budget	October 16, 2024
Transportation Verification 1	November 2024
Carryover FER	December 20, 2024
CEPI Count Day	February 2025 <small>Spring Collection Window Ends 2/26/25</small>
Transportation Verification 2	March 2025
Budgets/Allocation Updated (Count) 23-	April 7, 2025
2024-25 Mid-Year Class/Transp. Review	April 18, 2025
2024-2025 FER	October 15, 2025
Monthly Ledgers (Operational & Transportation)	15th of subsequent month
Mid-Year Review	October 15, 2025



24-25 GSRP Budget Schedule (1).pdf

2024-2025 GSRP Budget Schedule

[Download](#)

148.4 KB



Contract Checklist.pdf

[Download](#)

178.4 KB



Wayne RESA Early Childhood

Wayne is using Smore to create beautiful newsletters



SERVICE
LEADERSHIP
COLLABORATION
EXCELLENCE



Reporting and Monitoring/Assessment

Teachers and Directors who use GOLD: Spring Checkpoint for Teachers Webinar

Teachers and Directors who use GOLD: We will be hosting a **Spring Checkpoint for Teachers** webinar on **Tuesday April 15th at 2:00 pm**.

Please forward the link below to all of your teachers. In this webinar we will cover:

1. Where to find checkpoint dates
2. Reviewing your documentation collection
3. How to start a checkpoint by Class
4. Smart Suggestions for Checkpoints
5. Generating reports to support your instruction.
6. Generating reports to share with families.

Please click [here](#) to register!

Teaching Strategies GOLD Spring Checkpoint Webinar

MiRegistry Staff Information Report (SIR) Support

MiRegistry SIR Support: Contact support@miregistry.org

Staff Information Report

Extended to 4/14/25

Staff Information Report Checklist

Orgs should ensure profiles are current:

- ✓ All GSRP classrooms are properly named and enabled
- ✓ Lead and Associate teachers are assigned
- ✓ Years teaching GSRP/preschool are updated for every GSRP staff person
- ✓ Compliance plan tags are updated as applicable
- ✓ Benefits are completed for every GSRP staff person

Individuals should ensure:

- ✓ Personal profile information is updated
- ✓ Education/credentials updated if applicable
- ✓ Wage is updated
- ✓ Hours & months worked are updated (contact MiRegistry to make changes)

Reminders

- Benefits must be entered by the organization of each staff position.
- Individuals must have a MiRegistry account.
- According to the GSRP grant, individuals must provide Compensation Type, Compensation Amount, Hours per Week, and Months per Year.

If staff have not completed these mandatory fields, please request an update ASAP.

Enabling GSRP Records for Staff and Job Aids

Classroom Coach March 1st - May 16th

The Michigan Department of Lifelong Education, Advancement, and Potential outlines requirements for completing assessments for evaluating program quality. The Implementation Manual provides additional information on data collection and program quality.

The Classroom Coach measures the quality and use of the indoor and outdoor learning environments, teaching and learning routines, adult-child interactions (including interactions that encourage the development of expressive/receptive language, vocabulary, math, literacy, social and emotional skills, executive function skills and conflict resolution skills), evidence-based comprehensive curricula, planning to differentiate instruction based on student interests, ongoing child assessment to monitor learning and adapt/modify learning if needed, and family engagement activities.

Aggregated child outcome and program quality data are used to share success in meeting goals and to address needs that are revealed by data. Data collection helps drive continuous improvement efforts as data patterns lead to ISD-wide goals for improvement and professional learning.

Classroom Coach will be administered between March 1st and May 16th for the 2024/2025 School Year. All Wayne County classrooms will receive Classroom Coach spread over a 3-year cycle. Your Classroom-ECC or ECS will reach out to you to schedule time to conduct Classroom Coach.

ASQ Ages and Stages Questionnaire

ASQ Requirement

Ages & Stages Questionnaires® (ASQ®) provides reliable, accurate developmental and social-emotional screening for children.

ASQ Technical Assistance is available! If your program needs ASQ Online training, login or password info, or access to the Help Me Grow partner Google Drive please don't hesitate to reach out to Amber Anderson at Help Me Grow. Please see the TA Request Link below.

All GSRP programs should be a Help Me Grow partner to receive their ASQ Online Account.

Amber Anderson

amber@greatstartwayne.org

Care Coordinator/Technical Assistance

Help Me Grow Michigan

Great Start Collaborative Detroit-Wayne

313-410-5235

ASQ TA Request Link: [ASQ Assistance Request](#)

Google form link: [GSRP Partner Intake Form](#)

GSRP Office Hours every Thursday at 2pm

Topic: Amber Anderson's Personal Meeting Room

Join Zoom Meeting

<https://us06web.zoom.us/j/5969353317>

Meeting ID: 596 935 3317

ASQ Assistance



As part of our new program to bring you the quickest assistance with your ASQ Online accounts, please use the link below to our ASQ Assistance Request Link.

● [ASQ Assistance Request Link](#)



Wayne RESA Early Childhood

Wayne is using Smore to create beautiful newsletters



SERVICE
LEADERSHIP
COLLABORATION
EXCELLENCE



Social Emotional

Social Emotional Support

Dr. Kelly Anderson, Early Childhood Social Emotional Consultant

Dr. Anderson will be out of the office for the remainder of the school year on Maternity Leave. If you need support for the social emotional needs of students in your classroom, please do not hesitate to communicate with your RESA Consultant.

Due to Dr. Anderson's absence, SEL office hours have also been suspended until the start of the new school year. If you need a thought partner to support you with behavioral or inclusion needs please call the main GSRP phone line and we will connect you with someone who can help. 734-334-1312



Wayne RESA Early Childhood

Wayne is using Smore to create beautiful newsletters

Resources

SPRING FAMILY ENGAGEMENT NEWSLETTER

MARCH 2025

As we welcome the spring season, there are plenty of exciting opportunities to celebrate young learners and strengthen family connections! March is Reading Month, a perfect time to foster a love for literacy at home and in the classroom. In April, we honor young children and early childhood educators during NAEYC's Week of the Young Child, and we look ahead to Teacher Appreciation Week, where we'll recognize the incredible impact of our educators. This newsletter includes key dates, celebration ideas, and ways to engage families in meaningful ways this season. Let's make these months memorable!

MARCH IS READING MONTH

This month is all about celebrating the joy of reading with your little ones. To help make reading fun and engaging, our resource folder includes a **Family Reading Bingo**, a **list of local libraries**, and a **Library Bingo Card** to encourage visits to your neighborhood library. Let's make reading an adventure together!



WEEK OF THE YOUNG CHILD

April 5-11, 2025

Week of the Young Child is a fun-filled week celebrating early learning, young children, their teachers, families, and communities. The purpose of the Week of the Young Child® is to focus public attention on the needs of young children and their families and to recognize the early childhood programs and services that meet those needs.



SPRING RESOURCE FOLDER



Click or
Scan!



SPRING FAMILY ENGAGEMENT NEWSLETTER

MARCH 2025



SERVICE
LEADERSHIP
COLLABORATION
EXCELLENCE



TEACHER APPRECIATION WEEK

May 5-9, 2025

Also in the resource folder is a planning guide for administrators offering creative ways to celebrate teachers, such as virtual thank-you messages, classroom helper programs, teacher appreciation awards, and family-teacher collaborative projects.

Feel free to use these resources to make Teacher Appreciation Week meaningful and memorable!



FAMILY CELEBRATIONS!

Inclusive family engagement events are essential for building a welcoming and supportive school community. By embracing diverse family structures and avoiding gender-specific labels like "Muffins with Mom" or "Donuts with Dad," we ensure that all caregivers feel valued. Using inclusive event names such as "Family Feast" or "Special Treats with Special Guests" helps create meaningful experiences where every child can celebrate with someone special in their life.



FAMILY ENGAGEMENT CHAMPION AWARD

We are excited to announce the second year of the Family Engagement Champion Award! This award recognizes educators who go above and beyond to build strong partnerships with families and create meaningful connections between school and home. Winners will be featured by Detroit Public Television. More details are located in the resource folder.

We encourage you to nominate an outstanding educator who exemplifies family engagement.

[Nominate Here!](#)



Spring 2025 Family Engagement Newsletter (1).pdf

Download

1.8 MB

Dear Preschool Teachers,

We are thrilled to announce the second year of the Family Engagement Champion Award! This award was created to celebrate and honor the outstanding efforts of educators who go above and beyond to build strong, meaningful partnerships with families in our community-based preschool programs.

As we enter our second year, we continue to recognize the crucial role you play not only in teaching but also in fostering connections between school and home. Your dedication, creativity, and commitment to family engagement have a lasting impact on the children and families you serve, and we want to highlight your incredible work.

The Family Engagement Champion Award will recognize teachers who excel in the following areas:

1. Effective Communication with Families – Keeping families informed and engaged through regular updates, newsletters, and communication channels.
2. Sharing Classroom Learning – Showcasing children's learning experiences through photos, videos, and interactive displays to involve families in their child's education journey.
3. Encouraging Active Learning at Home – Providing resources and support for families to participate in educational activities at home, promoting a collaborative learning environment.
4. Planning Engaging Partnership Meetings – Organizing interactive and informative meetings where families can collaborate, share feedback, and actively participate in the educational process.

This award is more than just recognition—it's a celebration of the impactful work you do every day to create a positive learning environment for our children and strengthen our school community.

Teachers, administrators, or your early childhood consultant can nominate you for the Family Engagement Champion Award.

Exciting News! Detroit Public Television will once again highlight your school and the awarded teacher on their Facebook page. We can't wait to see the amazing ways you continue to engage families and inspire others through your innovative approaches. Let's make the second year of this award even more impactful!

Family Engagement Workgroup

Wayne RESA Family Engagement Workgroup



2025 Family Engagement Champion Award Letter (1) (1).pdf

Download
275.6 KB

Early Care and Education Wage Pilot Case Study Report & Recommendations

FOR IMMEDIATE RELEASE:

Friday, March 7, 2025

MEDIA CONTACT:

[Aundreana Jones-Poole](#)

517-930-4919

MiLEAP Release Report Highlighting Positive Impacts of Pilot Program to Strengthen Child Care Industry, Improve Child Care Affordability, Access

MiLEAP Bulletin



Early-Care-and-Education-Wage-Pilot-Case-Study-March-2025.pdf

[Download](#)

1.7 MB

Professional Learning

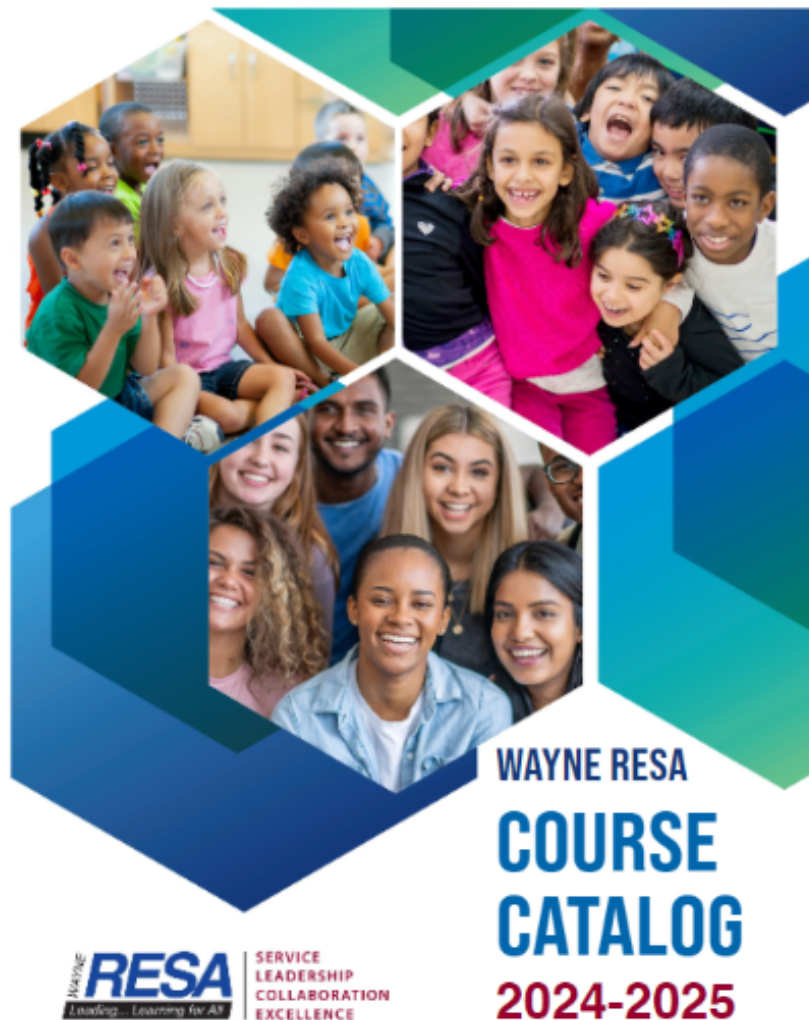
Literacy Professional Learning Opportunities

The Literacy Team works to address the literacy crisis across the state by closing the gap in Wayne County through extensive training in early childhood developmentally appropriate literacy practices. Below is a list of our offerings for the remainder of the school year. **REGISTER TODAY!**

6611 - Pre-Kindergarten Read Alouds in Practice: There should be at least two planned read aloud times in every prekindergarten daily routine. 1) Read aloud with reference to print; and 2) Interactive read aloud with a comprehension and vocabulary focus. Participants who join this session will gain practice in efficiently planning for these two read aloud times and observe both types of read alouds in practice. Friday, May 2, 2025 9:00 AM - 12:15 PM



Wayne RESA Course Catalog 2024-2025



Search for additional professional learning opportunities by clicking here: [LEARNING STREAM](#)

Attention Directors:

Invite teachers to attend upcoming Wayne RESA Early Childhood Professional Learning Opportunities!

Upcoming WRESA Early Childhood Professional Learning

SAVE THE DATE!

The MAISA Early Math and Early Literacy teams will be sharing common space at the Amway Grand Plaza Hotel in Grand Rapids during the week of August 11-14.



Early Math Leadership Institute

August 11-13, 2025

Purpose

To bring Michigan education leaders together to align their vision of early math teaching and learning and engage with resources, build community and inspire a systems approach to instructional transformation.

Target Audience

ISD Leadership Teams of up to 10 participants

- GELN Member
- ECAN Member
- SELN Member
- Mathematics Consultant(s)
- Other Education Consultants
- ISD Elementary Math Specialists
- Early Childhood Consultants/Coaches/Specialists
- LEA Leader(s) with focus on math
- Literacy Consultant and/or Coaching Coordinator (August 12)





Annual Literacy Coaching Institute

August 13-14, 2025

Purpose

This institute is designed for Michigan's state-wide Early Literacy Coaching Network in which coaches gather to engage in high-quality research-aligned professional learning. The content builds upon the culmination of learning from the previous year's quarterly meetings and serves as a launch into the 2025-2026 school year.

Please note: This institute meets one of the [MOE 35a required assurances](#). Attendance is required for coaches funded through 35a.

Target Audience

- ISD Literacy Coaches
- ISD Coach Coordinators
- ISD Positions directly supporting coaching work
- GELN Member



*With remote sites in the upper peninsula



PreK TOT_Save the Date (May 2025).pdf

Download
302.9 KB

Local Field Trips

Planning Field Trips

Family and community engagement is crucial to enhancing our educational programs. By planning field trips within Wayne County & its surrounding areas, we aim to create meaningful learning experiences that connect children, families, and the community. These trips will provide opportunities for children to explore local resources, engage with diverse environments, and build stronger connections with the world around them, all while reinforcing the importance of family involvement in their educational journey.



Belle Isle Nature Center
<https://belleislenaturecenter.org/>
 Contact: 313-852-4056



Belle Isle Park
 DNRBelleIsleQuestions@michigan.gov
 Contact: (313) 821-9844



Brilliant Detroit
<https://brilliantdetroit.org/>
 Field Trip Interest Form



The Charles H. Wright Museum of African American History
<https://detroitwrithe.org/>
 Email: info@detroitwrithe.org
 Contact: (248) 808-8467



Cranbrook Institute of Science
<https://science.cranbrook.edu/>
 Email: info@cranbrook.edu
 Contact: (248) 645-3200



Detroit Historical Museum
<https://detroithistorical.org/>
 Email: info@detroithistorical.org
 Contact: (313) 833-7935



Detroit Hives
<https://detroitwrithe.org/>
 Email: info@detroitwrithe.org
 Contact: (248) 808-8467



Detroit Riverfront
<https://detroitriverfront.org/>
 Email: info@detroitriverfront.org
 Contact: (313) 566-8200



Detroit Zoo
<https://detroitzoo.org/>
 Email: info@detroitzoo.org
 Contact: (248) 541-5717



Dossin Great Lakes Museum
<https://detroithistorical.org/dossin-great-lakes-museum/plan-your-visit/general-information>
 Email: info@detroithistorical.org
 Contact: (313) 833-1805



The Henry Ford Museum of American Innovation & Greenfield Village
 Email: contactus@thehenryford.org
 Contact: (313) 982-6001

LET'S GO
ADVENTURE



SERVICE
LEADERSHIP
COLLABORATION
EXCELLENCE





The Detroit Children's Museum
Reopening soon- Learning Kits Available
Email: info@detroitchildrensmuseum.org
Contact: (313) 873-8100



Potters Creations- Wyandotte
<https://www.potterscreations.com/>



Detroit DNR Outdoor Adventure Center
Website: <https://www.michigan.gov/oac>
Email: DNR-OAC@Michigan.gov
Phone: 844-622-6367 (844-OAC-MDNR)



Ann Arbor Hands on Museum
Field trips website:
<https://discoverscienceandnature.org/field-trips>
Contact: (734) 995-5439



Michigan Science Center
<https://www.mi-sci.org/>
Email: info@msci.org
(313) 577-8400





If you printed this document and need to get the links scan here!

When planning a field trip, consider how it:

- Supports individual family goals as well as the program's goals for socializations
- Aligns with the existing curriculum, goals, and experiences
- Increases families' awareness and access to community resources
- Responds to the developmental stages of all the children in your program
- Accommodates young children who may be active or noisy
- Promotes culturally and linguistically appropriate activities and locations
- Accommodates children with Individualized Family Service Plans or Individualized Education Programs and fits with their goals and needs
- Allows for adaptations necessary for children suspected of or who have disabilities to fully participate in the field trip experience
- Provides accessibility to any family members with special needs
- Is child- and family-friendly and whether the location has enough room for families to bring equipment such as strollers, diaper bags, or other gear
- Provides accommodations for feeding and diapering
- Ensures families can get to the field trip site by including reasonable transportation options that conform to program policies and guidelines

ECCLKC



SERVICE
LEADERSHIP
COLLABORATION
EXCELLENCE



GSRP & SB Field Trip Ideas.pdf

Download
10.2 MB

Empowering Education Leaders: A Toolkit for Safe, Ethical, and Equitable AI Integration

Resource: [AI toolkit](#)

This relevant, user-friendly resource was developed through engagement with educators, community members and technology leaders and is shaped by the real-world challenges faced by schools and districts of all sizes. Whether an education leader is at the beginning stages of AI adoption or is already exploring its applications, this toolkit offers critical guidance to support the intentional use of AI in education across ten key modules—from federal policies to pressing educational issues, including privacy, data security, civil rights, and digital equity. Educators can download a copy of the toolkit at the U.S. Department of Education's [Office of Educational Technology website](#).

Tom Knight

Program Consultant for Business, Finance, and IT
Michigan Department of Education
Office of Career and Technical Education
608 West Allegan Street
PO Box 30712
Lansing, MI 48909

knightt@michigan.gov

Early On

We know that many of our programs serve infants and toddlers, and Wayne RESA is committed to supporting you to serve families of the youngest of children.

Early On is designed to provide comprehensive services to eligible infants and toddlers and their families. RESA collaborates with Wayne County Human Service agencies, Early Head Start, Infant Mental Health programs as well as local school districts to provide services.

Making a Referral

To make a referral for Early On, please do one of the following:

- Call the Wayne RESA Referral Hotline at (734) 334-1393 or 1-800-EARLYON.
- email echild@resa.net.
- visit the [Early On online referral](#) website.



**Submit a referral for
Early On**

[Learn more about Early On](#)

- 0 years to 2 years, 10 months

Safe And Healthy Schools

Did you know...

Wayne RESA GSRP offers School Nurse Consulting Services to support you, Wayne RESA GSRP and Strong Beginnings partners, in meeting the chronic and acute health needs of your students?

School Nurse Consulting Services, which are available upon request, include:

- Review of and recommendations on program health policies and procedures.
- Free attendance for program staff to the foundational training, Safe and Legal Support of Students with Health and Medication Needs.
- Assistance in securing appropriate individual Medication Administration Authorizations (MAAs) and Medical Management Plans (MMPs)
- Facilitated trainings to support safe implementation of individual MMPs for all identified students, including:
 - Access to templates of necessary forms;
 - Review of completed MAA and MMP forms;
 - General Tier 1 (Awareness) sessions on recognizing and beginning the response to potential health-related emergencies;
 - Student-Specific Tier 2 (Emergency Care) and Tier 3 (Daily Care and Support) training sessions with the identified school health teams and parents/guardians;
- Unlimited consultation for safe and legal school support of identified students' health needs.

- Free attendance for school staff to Medical Emergency Response Team (M.E.R.T.) Training.
- Communicable disease guidance and support.

Please complete this [GSRP Nurse Consulting Services Request Form](#) to initiate a formal request for support.

Great Start Collaborative – Wayne County

Great Start Detroit / Wayne County is dedicated to ensuring every child has a strong start in life by collaborating with families and community partners. We help you stay connected with Free to low-cost Events, Help & Fun in Detroit & Wayne County!

On our [Find Help](#) page, you will find resources for shelters, food, diapers, finance, and so much more.



Looking for free or low-cost Family Fun? We also work hard to find all the local activities, festivals, reading fun, arts and crafts, and more! Check out our [Find Fun](#) Page.

Lastly, Check out our updated [Out and About Resource Guide](#)!

Click below for

START Trainings and Training Series

START

Statewide Autism Resources & Training

24th Annual START Conference

**Empowering Students
through Communication**



24th Annual START Conference

We are excited to share that [registration is open](#) for the **24th Annual START Conference: Empowering Students through Communication**, taking place on **April 28, 2025**, at the **Lansing Center in Lansing, Michigan**.

We anticipate the conference will reach capacity so we encourage you to register soon.

We are excited to feature Keynote Sessions from Caroline Gaddy, MFA, MA, CCC-SLP and Ashley Larisey, MS, CCC-SLP/L and afternoon breakout sessions! We hope you will join us.

Registration Information:

- **Standard:** \$105.00
 - **Student:** \$30.00 (Individual should be an active student and not employed full-time)
 - **Parent or family member of a child with a disability:** \$75.00
-

Michigan's Child Care Center Administration Business Series is Now Available On Demand!



Are you interested in becoming a Program Director of a licensed child care center or are you an established Program Director looking for strategies and best practices for managing a child care center? If so, this course is for you!

This 30 hour course will cover:



How to efficiently manage and maintain a high-quality center



The art of budgeting, fee management and financial reports to ensure your center's financial health



Effective methods to attract families and increase enrollment through strategic marketing initiatives



Acquiring and retaining talented staff through leadership techniques and creating a positive work environment



Michigan's child care center licensing rules to ensure compliance and successful program management

Access the course at: <https://plp.michiganvirtual.org/?course=1036>

Cost: \$30

This state developed course meets the child care administration content requirement for center program directors.



April 2025



Professional Development for Early Childhood Educators

In-Person Trainings

Apr. 4, 12:30-2:30 p.m.: Reading Fun for Everyone (at Leaps & Bounds Family Services 8129 Packard Ave. Warren, MI 48089) ▲ ● 2 & 8 ■ 3 & 6

Apr. 4, 2:45-3:45 p.m.: Learning Lab: Reading Fun for Everyone – The Art of Storytelling (at Leaps & Bounds Family Services 8129 Packard Ave. Warren, MI 48089) ▲ ● 3 ■ 1

Apr. 8, 5:30-7:30 p.m.: Adult Child Interaction (at Leaps & Bounds Family Services 8129 Packard Ave. Warren, MI 48089) ● 3 & 8 ■ 1 & 2

Apr. 8, 5:30-7:30 p.m.: Toddler Techniques: 12-24 Months (at Leaps & Bounds Family Services 8129 Packard Ave. Warren, MI 48089) ● 3 & 5 ■ 1, 2 & 7

Apr. 9, 6-8 p.m.: Outdoor Activity 0-5 (at Steppin Out On Faith Learning Center 25941 Coolidge Hwy. Oak Park, MI 48237) ● 1 & 2 ■ 1

Apr. 12, 9-11 a.m.: Michigan Ongoing Health and Safety Training Refresher 2025 (at Leaps & Bounds Family Services 8129 Packard Ave. Warren, MI 48089)

Apr. 23, 5:30-6:30 p.m.: Learning Lab: Strengthening Families - Social and Emotional Competence of Children (at Leaps & Bounds Family Services 8129 Packard Ave. Warren, MI 48089) ● 3 ■ 4 & 5

Apr. 25, 5-7 p.m.: Learning Through Song and Rhyme (at 17515 W. 9 Mile Rd. Southfield, MI 48075 Suite 190) ● 2 & 8 ■ 1

Apr. 25, 7:30-8:30 p.m.: Learning Lab: Learning Through Song and Rhyme - Let's Sing (at 17515 W. 9 Mile Rd. Southfield, MI 48075 Suite 190) ● 3 ■ 1

Live Virtual Trainings

Live Virtual Trainings and Learning Labs are interactive webinars. Instructions will be given upon registering on MiRegistry.org.

Apr. 1, 5:30-7:30 p.m.: Tough Talks with Colleagues and Co-workers ▲ ● 6 ■ 7

Apr. 4, 12-2 p.m.: Parent-Teacher Conferences ▲ ● 2 & 4 ■ 1 & 4

Apr. 10, 12-2 p.m.: Addressing the Elephant - Hidden Bias ▲ ● 3 ■ 3 & 6

Apr. 10, 5:30-7:30 p.m.: Introducing Brain Development in the Early Years ● 2 & 3 ■ 1 & 2

Apr. 11, 1-2 p.m.: Learning Lab: Creativity and Confidence - Infant Toddler Art ● 3 ■ 1

Apr. 22, 6-7 p.m.: Learning Lab: Strengthening Families - Knowledge of Parenting and Child Development ● 4 ■ 4 & 5

Apr. 28, 12:30-2:30 p.m.: Cultural Competence in Early Childhood - It Starts with You ▲ ● 4 ■ 1 & 3

Apr. 28, 6-8 p.m.: Understanding Adverse Childhood Experiences (ACEs) ● 1 & 6 ■ 2

Apr. 29, 12-1 p.m.: Learning Lab: Schedules and Routines- Let's Schedule ● 8 ■ 1

Apr. 29, 5-7 p.m.: Inclusive Practices: Planning for the Special Needs of All Children ▲ ● 3 & 4 ■ 1, 3 & 4



This flyer was developed under a grant awarded by the Michigan Department of Lifelong Education, Advancement, and Potential using Child Care Development Funds (CCDF).

Great Start to Quality Wayne-Oakland-Macomb Resource Center | greatstarttoquality.org | facebook.com/GreatStarttoQualityWOM



April 2025



Professional Development for Early Childhood Educators

Pre-Recorded Self-Paced Webinars

Participants will receive emailed instructions with course requirements as the training date nears.

- | | | |
|---|--|---|
| Apr. 1, 10 a.m.-12 p.m.: Curiosity and Questioning: Preschool Science ●2 & 8 ■1 | Apr. 8, 5:30-7:30 p.m.: Creativity and Confidence: Art Activities ●2 & 8 ■1 | Apr. 16, 5:30-7:30 p.m.: Conflict Resolution: Temperament and Learning ●3 & 8 ■1 & 2 |
| Apr. 2, 5:30-7:30 p.m.: Active Learning Foundations ●2 & 8 ■1 | Apr. 9, 6-8 p.m.: Let's Move ●2 & 8 ■1 | Apr. 21, 10 a.m.-12 p.m.: Treasure Baskets with Infants and Toddlers ●2 & 8 ■1 |
| Apr. 3, 12-2 p.m.: Conflict Resolution: Toddler Temperament ●3 & 8 ■1 & 2 | Apr. 9, 5-7 p.m.: Caregiver Interactions ●2 & 8 ■1 | Apr. 22, 7-9 p.m.: Schedules and Routines ●2 & 8 ■1 |
| Apr. 3, 12:30-2:30 p.m.: Hold the Praise: Try Encouragement Instead ●3 & 8 ■1 | Apr. 10, 1-3 p.m.: How to: Activity Times ●2 & 8 ■1 | Apr. 24, 11:30 a.m.-1:30 p.m.: Talk to Me ●3 & 8 ■1 |
| Apr. 4, 10 a.m.-12 p.m.: Conflict Resolution: Helping Toddlers Problem Solve ●3 & 8 ■1 & 2 | Apr. 11, 2-4 p.m.: Playroom Materials and Organization ●2 & 8 ■1 | Apr. 24, 5-7 p.m.: Conflict Resolution: Strategies for Problem Solving ●3 & 8 ■1 & 2 |
| Apr. 7, 6-8 p.m.: Planning and Recall with Children ●2 & 8 ■1 | Apr. 14, 10 a.m.-12 p.m.: Learning Through Song and Rhyme ●2 & 8 ■1 | Apr. 28, 10 a.m.-12 p.m.: Activities for School-Aged Children ▲■7 |
| | Apr. 15, 6-8 p.m.: Let's Pretend ●3 & 8 ■1 | Apr. 30, 6-8 p.m.: Understanding Preschool Development ●2 & 8 ■1 |



We Value Your Feedback!

The ECE Team works hard to develop impactful trainings and ensure that we are a supportive, knowledgeable and reliable resource for all Child Care Providers. Hearing your feedback helps us grow- we encourage you to scan this QR code and share any comments you may have.

LEGEND

▲ SCECH Eligible* ● CDA Content Area ■ GSQ PD Area

*Statewide continuing education clock hours (SCECH) are available for certified staff. Additional information required.



Register at [MiRegistry.org](https://miregistry.org). If you are unable to find a course you are looking for or have other questions about registration, call 877.614.7328.



This flyer was developed under a grant awarded by the Michigan Department of Lifelong Education, Advancement, and Potential using Child Care Development Funds (CCDF).

Great Start to Quality Wayne-Oakland-Macomb Resource Center | greatstarttoquality.org | facebook.com/GreatStarttoQualityWOM



April 2025 ECE Calendar.pdf

Download

1.4 MB

GREAT START to Quality

Wayne-Oakland-Macomb Resource Center

May 2025



Professional Development for Early Childhood Educators

In-Person Trainings

May 8, 7-8 p.m.: Learning Lab: Creativity and Confidence - Infant Toddler Art (at 17515 W. 9 Mile Rd. Southfield, MI 48075 Suite 190) ● 3 ■ 1

May 20, 6:30-7:30 p.m.: Learning Lab: Creativity and Confidence - Infant Toddler Art (at 17515 W. 9 Mile Rd. Southfield, MI 48075 Suite 190) ● 3 ■ 1

May 22, 9:30 a.m.-12:30 p.m.: Supporting Families Experiencing Homelessness: How Child Care Providers Can Help (at Wayne RESA 33500 Van Born Rd. Wayne, MI 48184) ■ 4

May 30, 10 a.m.-12 p.m.: School-Aged Children: Keeping Them Safe! (at Leaps & Bounds Family Services 8129 Packard Ave. Warren, MI 48089) ■ 1

Infant-Toddler Focused Super Saturday Conference!

Join the ECE Career Center at Leaps & Bounds Family Services (8129 Packard Ave. Warren, MI 48089) on Saturday May 17, 2025 to earn 4.5 professional development hours while expanding your infant-toddler knowledge.

You don't want to miss this educational and resourceful opportunity!



To register, scan the QR code or call one of our Customer Service Navigators at (313) 402-0802 or (586) 879-3303.

Act fast, spots are limited!

Live Virtual Trainings

Live Virtual Trainings and Learning Labs are interactive webinars. Instructions will be given upon registering on MiRegistry.org.

May 6, 5:30-6:30 p.m.: Introduction to HOPE (Healthy Outcomes from Positive Experiences) ● 8 ■ 2

May 14, 6-8 p.m.: Baby Basics ● 1 & 8 ■ 1

May 16, 12-1 p.m.: Learning Lab: Schedules and Routines- Let's Schedule ● 8 ■ 1

May 22, 6-8 p.m.: Infant Toddler Environments: Introducing Environment as the "Third Teacher" ● 2 & 5 ■ 1

May 23, 12-2 p.m.: Introducing Brain Development in the Early Years ● 2 & 3 ■ 1 & 2



This flyer was developed under a grant awarded by the Michigan Department of Lifelong Education, Advancement, and Potential using Child Care Development Funds (CCDF).

Great Start to Quality Wayne-Oakland-Macomb Resource Center | greatstarttoquality.org | facebook.com/GreatStarttoQualityWOM



May 2025



Professional Development for Early Childhood Educators

Pre-Recorded Self-Paced Webinars

Participants will receive emailed instructions with course requirements as the training date nears.
The webinar must be watched in it's entirety to receive credit.

May 1, 11:30 a.m.-1:30 p.m.:
Playroom Materials and Organization
● 2 & 8 ■ 1

May 5, 9-11 a.m.: Creativity and
Confidence: Art Activities
● 2 & 8 ■ 1

May 5, 5-7 p.m.: Planning and
Recall with Children
● 2 & 8 ■ 1

May 6, 12-2 p.m.: Active Learning
Foundations ● 2 & 8 ■ 1

May 6, 6-8 p.m.: Curiosity and
Questioning: Preschool Science
● 2 & 8 ■ 1

May 7, 12-2 p.m.: Let's Pretend
● 3 & 8 ■ 1

May 7, 5-7 p.m.: How to: Activity
Times ● 2 & 8 ■ 1

May 8, 6-8 p.m.: Activities for School-
Aged Children ▲ ■ 1

May 9, 1-3 p.m.: Conflict Resolution:
Toddler Temperament ● 3 & 8 ■ 1 & 2

May 13, 6-8 p.m.: Schedules and
Routines ● 2 & 8 ■ 1

May 14, 6-8 p.m.: Caregiver
Interactions ● 2 & 8 ■ 1

May 15, 2-4 p.m.: Conflict Resolution:
Strategies for Problem Solving
● 3 & 8 ■ 1 & 2

May 16, 1-3 p.m.: Conflict Resolution:
Temperament and Learning
● 3 & 8 ■ 1 & 2

May 19, 6-8 p.m.: Learning Through
Song and Rhyme ● 2 & 8 ■ 1

May 20, 6-8 p.m.: Hold the Praise: Try
Encouragement Instead ● 3 & 8 ■ 1

May 21, 12-2 p.m.: Let's be Friends
● 2 & 8 ■ 1

May 21, 6-8 p.m.: Reading Fun for
Everyone ▲ ● 2 & 8 ■ 1

May 28, 12-2 p.m.: Math Learning
● 2 & 8 ■ 1

May 28, 2-4 p.m.: Conflict Resolution:
Helping Toddlers Problem Solve
● 3 & 8 ■ 1 & 2

May 29, 4-6 p.m.: Treasure Baskets
with Infants and Toddlers ● 2 & 8 ■ 1



We Value Your Opinion!

We are working hard to develop informative and exciting new trainings in 2025- keep checking our upcoming calendars for more details! In the meantime, we encourage you to scan this QR code and share any suggestions you may have for content you'd like to see in an upcoming training.

LEGEND

▲ SCECH Eligible* ● CDA Content Area ■ GSQ PD Area

*Statewide continuing education clock hours (SCECH) are available for certified staff. Additional information required.



Register at MiRegistry.org. If you are unable to find a course you are looking for or have other questions about registration, call 877.614.7328.



This flyer was developed under a grant awarded by the Michigan Department of Lifelong Education, Advancement, and Potential using Child Care Development Funds (CCDF).

Great Start to Quality Wayne-Oakland-Macomb Resource Center | greatstarttoquality.org | facebook.com/GreatStarttoQualityWOM



May 2025 ECE Calendar.pdf

Download

1.4 MB


Michigan Department of Lifelong
Education, Advancement, and Potential

- Child Care Licensing [Child Care Licensing \(michigan.gov\)](https://www.michigan.gov/child-care-licensing)
- Our Strong Start (connecting with a navigator) [Our Strong Start \(michigan.gov\)](https://www.michigan.gov/our-strong-start)
- CCHIRP Technical Assistance [CCHIRP \(michigan.gov\)](https://www.michigan.gov/cchirp)

BFS Plan Review Office Hours

Child Care Licensing has partnered with the Licensing and Regulatory Affairs Bureau of Fire Services plan review division to offer monthly office hours. This is an opportunity to stay informed, connected, and ask questions surrounding plan reviews.

BFS Office Hours with Kristy Carmichael

Thursday March 6, 2025 3-4pm	Register Here
Thursday April 3, 2025 3-4pm	Register Here
Thursday May 1, 2025 3-4pm	Register Here
Thursday June 5, 2025 3-4pm	Register Here
Thursday July 3, 2025 3-4pm	Register Here
Thursday August 7, 2025 3-4pm	Register Here



Licensing and Regulatory Affairs

State of Michigan – Child Care Licensing Bureau Support

Paris Howard - Wayne

Area Manager

313-300-4317

HowardP10@michigan.gov

<https://www.michigan.gov/mileap/early-childhood-education/cclb>

Upcoming Office Hours:
Wayne Region with Paris Howard

Apr 16, 2025
May 21, 2025
Jun 18, 2025
12:00 p.m. to 1:00 p.m

[Zoom Registration Link - Wayne Region](#)

Wayne Region Office Hours Link



Help Me Grow
Michigan

Consultant FAQ

ASQ Support

Ages & Stages Questionnaires® (ASQ®) provides reliable, accurate developmental and social-emotional screening for children.

ASQ Technical Assistance is available! If your program needs ASQ Online training, login or password info, or access to the Help Me Grow partner Google Drive please don't hesitate to reach out to Amber Anderson at Help Me Grow. Please see the TA Request Link below.

All GSRP programs should be a Help Me Grow partner to receive their ASQ Online Account.

Amber Anderson

amber@greatstartwayne.org

Care Coordinator/Technical Assistance

Help Me Grow Michigan

Great Start Collaborative Detroit-Wayne

313-410-5235

GSRP Office Hours every Thursday at 2pm
Topic: Amber Anderson's Personal Meeting Room

Join Zoom Meeting

<https://us06web.zoom.us/j/5969353317>

Meeting ID: 596 935 3317

ASQ TA Request Link: [ASQ Assistance Request](#)

Google form link: [GSRP Partner Intake Form](#)

Help Me Grow Partner Folder

A graphic for the ASQ Assistance Request Link. It features a blue background with a white circular inset showing a red apple, a red stapler, and a pencil holder with colored pencils. Above the inset, the word 'School' is written in large, colorful letters. The text 'ASQ Assistance' is prominently displayed in the center. At the top left, the RESA logo is visible, and at the bottom right, there is a white paper airplane icon.

RESA | SERVICE LEADERSHIP
Leading... Learning for All | COLLABORATION
EXCELLENCE

ASQ Assistance

As part of our new program to bring you the quickest assistance with your ASQ Online accounts, please use the link below to our ASQ Assistance Request Link.

[ASQ Assistance Request Link](#)

Great Start to Quality Job Board

Do you have openings in your program? Great Start to Quality can help you find qualified candidates!

[Early Childhood Job Board - Great Start to Quality](#)



Job postings are good for 60 days and can be renewed, if needed.

Send the jobs description(s), program location and submission contact information to jobs@ecic4kids.org

Once a candidate submits a resume or cover letter, Great Start to Quality sends them directly to the program.

School Readiness Advisory Committee

Parent/Guardian SRAC Interest Form

Teacher SRAC Interest Form

Set your child up
for success.

FindPreK.org



RESA
Leading... Learning for All

MILEAP

These materials were developed
Under a grant awarded by the
Michigan Department of Lifelong
Education, Advancement,
and Potential.

FindPreK.org

جهز طفلك
لتحقيق النجاح



RESA
Leading... Learning for All

MILEAP

لم تطوير هذه المواد بواسطة مؤسسة
ملي إيداف من أجل تعليمات التعليم
من أجل الحياة والتعليم والتميز

**Prepare a su hijo
para el éxito.**

FindPreK.org



Quick Links

Communications Toolkit to Promote GSRP

FY2025 GSRP Income Eligibility Requirements

Enrollment & Eligibility Resources

Great Start Readiness Program Implementation Manual

MDE Professional Learning

Submit/Update Hub Contact Email

EC Digest : Past Editions (pdf version)

Quick Download



**WRESA_GSRP_Administrative_Guidelines_Procedures_Manual
_2024.pdf**

Download
5.4 MB



5 day program guidance.docx

[Download](#)

178.6 KB



4 day program guidance.docx

[Download](#)

172.1 KB



2024-2025_expanded_income_eligibility.pdf

[Download](#)

153.8 KB



GSRP Birthdate Windows.pdf

[Download](#)

116.4 KB



2024-2025 GSRP Payment Schedule.pdf

[Download](#)

476.5 KB



24-25 GSRP Budget Schedule.pdf

[Download](#)

148.4 KB



Wayne RESA Early Childhood

Wayne is using Smore to create beautiful newsletters